

*Independent School District #721
New Prague Area Schools*

*2008-2009
Strategic Planning Committee*

RECOMMENDATION

*presented
to:*

*Independent School District #721
Board of Education*

EXECUTIVE SUMMARY

The Citizens' Facilities Planning Committee is pleased to present the following recommendation to the Independent School District #721 Board of Education.

We wish to thank the Board of Education for authorizing the formation of the Planning Committee for examination of the District's existing facilities, and the potential need for new facilities. In addition, we would like to express our appreciation to the Administrative Team for their exhaustive efforts in providing the Planning Committee with the information necessary to develop this recommendation.

The recommendation that follows is the culmination of over 1,000 combined hours, and represents the consensus of over four months of meetings and analysis. Thank you for your consideration of this recommendation.

STRATEGIC PLANNING COMMITTEE

February 23, 2009

TABLE OF CONTENTS

	<u>Page</u>
Committee Membership	2
Process	3
Consensus Statements	4 - 6
Recommendation	7 - 8
Appendix	
- Appendix A: Growth Models	
- Appendix B: Estimated Project Costs	
- Appendix C: Meeting Minutes	
- Appendix D: Building Capacities	
- Appendix E: Enrollment Projections from <u>School Finances.Com</u> Study	

COMMITTEE MEMBERSHIP

The Strategic Planning Committee was comprised of a broad cross section of interests from School District residents and parents, to District staff and administration.

Committee Members

Ben Bartusek
Sherry Brooks
Steve Bruchman
Ken Bruzelius
Tom Doig
Mary Drazan
Julie Dvorak
Mike Eischens
Marvin Erickson
Jim Friedges

Charlie Hatch
Virginia Lucier Hoyt
Christa Ingebrand
Nancy Johnson
Chuck Kajer
Julie Martin
Stephanie Nelson
Ken Ondich
Tammy Pexa
Pat Pribyl

Chris Remer
Mark Rezac
Doug Schoenecker
Matt Sticha
Steve Trewartha
Amy Trygestad
Lois Tuma
Diane Weyrich

School Board Representatives

Marty Beckius, School Board
Dan Carlson, School Board
Don Dvorak, School Board
Denny Havlicek, School Board
Larry Pint, School Board
Bob Reed, School Board
Jerry Walerius, School Board

Resources

Craig Menozzi, Superintendent
Colleen Cardenuto, Director of Curriculum & Testing
Amy Eich, Community Education Director
Dan Pyan, Director of Finance
Tim Rybak, Director of Operations
Margaret Sticha, Board Secretary

Facilitators

Vaughn Dierks, Wold Architects and Engineers
Linn Bjornrud, Wold Architects and Engineers

PROCESS

The Strategic Planning Committee's charge was to develop a consensus position regarding a preferred direction for resolving the District's long-term grade organization and facility space needs, and to develop a recommendation to advise the Board of Education on the scope, content, and timeline for future bond referenda.

The Planning Committee convened for six (6) meetings beginning in October 2008 and concluding in January 2009. Meetings were typically held at Falcon Ridge Elementary School, and tours of all of the Elementary, Middle, and High Schools were incorporated into the meetings to gain understanding of the facilities and discuss program issues with the respective building staff. During the four (4) month period, the Planning Committee worked to develop a thorough understanding of the following:

- Projected enrollment and population growth, and associated regional factors.
- The capacities and capabilities of existing facilities.
- The current grade structure for the District.
- The options for grade reorganization within the existing facilities.
- The space needs in each building, as well as District-wide space needs.

Information was supplied at each meeting by numerous sources on a variety of topics. These presentations/tours served to inform the Planning Committee on the physical condition and programmatic issues of the District's facilities. The principals from each of the District's five schools, along with other selected staff and personnel, provided information on current building use, capacities, and student program options. District administrators provided information on student enrollment, school finance and tax impact, information related to both past and potential future bond referenda, and their vision for the future of New Prague Area Schools. Wold Architects and Engineers aided the Planning Committee in identifying the expansion potential of the existing facilities, the project costs associated with a variety of facility development options, and the establishment of a set of criteria (in the form of 'Consensus Statements') for evaluating those options and finalizing their recommendation. In conjunction with the process of information gathering, much of the Planning Committee's time was spent in large group discussion.

CONSENSUS STATEMENTS

- Providing students with a quality educational experience is a primary priority.
- Maintaining this quality experience requires an ongoing effort and continuous planning for our facilities. We strongly agree that doing nothing is not an option.
- We support the findings in the School Finances.Com enrollment projections document.
- We agree on the current capacity of our school buildings based on classroom counts and current student/classroom ratios.
- To be fiscally efficient, we must strive to have “full” buildings throughout the phases of executing a plan. We feel it is important to continue to use all of the buildings owned by the District to support education and the community.
- A plan must accommodate projected growth, with the ability to adjust if growth does not occur at the expected rate. We feel that any future building projects, (new, or additions), must be justified by realized enrollment growth to avoid overbuilding. An acceptable “trigger point” for action is 95% of building capacity.
- We agree on the following grade structure as a District standard: **[K-5 / 6-8 / 9-12]**. The group, however, feels that temporary adjustments to grade structure need to remain an option to provide flexibility during growth transition periods. We feel that these temporary adjustments should comply with the following:
 - We agree with past planning groups, who recommended that the 6th grade not be included in an elementary model, (i.e. K-6).
 - The 8th grade should not be included in a high school setting, (i.e. 8-12).
 - The 5th grade should be flexible, with the possibility of inclusion in an elementary setting, (i.e. current configuration of K-5), or a middle school setting, (i.e. 5-8).
 - The 9th grade could also be flexible, with the possibility of inclusion in a high school setting, (i.e. current configuration of 9-12), or the creation of a 9th grade center.
- As the District continues to grow, we need to address growth in the areas that growth is taking place. Bus rides for students should continue to be limited to a maximum of 65 minutes.
- We believe that District facilities need to be available for community use. The District should consider partnerships to provide enhanced educational and community facilities and services.
- We feel the District has continuously made safety a priority, and support that effort. We would encourage the Board of Education to continue investing in security and safety projects that benefit our schools, as they deem appropriate.
- If middle school students continue to be housed in the CEC building, safe pedestrian travel needs to be provided between the CEC building and the current middle school.

- We agree that the High School, Raven Stream E.S., and Eagle View E.S. are excellent facilities and represent the quality standard by which other District facilities will be measured.
- As a community, we believe that our buildings need to operate efficiently and provide healthy environments for users. Currently the most critical infrastructure needs exist at the older facilities in the District. Critical deferred maintenance items should be addressed at the current middle school, Falcon Ridge E.S., and the CEC building.
- Single pane windows at Falcon Ridge (1968 portion) and the CEC building (1961 portion) do not provide an efficient barrier from the elements. This leads to heat loss in the winter and heat gain in the summer. These windows should be replaced with thermally broken, insulated glass, window systems.
- We strongly believe that a healthy learning environment must provide adequate ventilation for students and staff. The District should strive to have all buildings meet the minimum ventilation requirements as specified in ASHRAE 62, Addendum N. Buildings or areas that are found to be substantially deficient should be addressed immediately. These minimum ventilation rates are calculated based on square footage and number of occupants as follows:
Classroom: 10 CFM / Occupant + .12 CFM / S.F.
Lab Space: 10 CFM / Occupant + .18 CFM / S.F.
- We believe that the District has put great effort into increasing the energy performance of facilities. We support this effort, and encourage continued investments.
- All District facilities should provide accessible routes, access to teaching stations, and ADA accessible restroom facilities. The District should continue to address accessibility issues that remain.
- We believe that the current middle school site is inadequately sized. It does not meet the state guideline recommendations for site size, and athletic fields are not on District property. This site should be expanded.
- Land acquisition should be considered to accommodate growing program needs. The amount of fields/outdoor play areas needs to be increased to accommodate educational, athletic, and community demand. The District should take advantage of current potential for a "favorable market".
- Currently, students and athletes are required to travel out of the District to access a swimming pool. We feel that a pool is strongly wanted within the District for educational, community, and athletic use.

- The District has storage needs that cannot be accommodated with the facilities available today. Rental space is currently being utilized to relieve this need. We feel that adequate storage should be provided in an efficient and reasonable manner. Storage should be evaluated yearly to avoid “over saving” of materials that should be discarded or sold.
- Currently, the District must store 7 buses and 28 vans outside of the enclosed bus garage facility. These District vehicles remain exposed to the elements. We feel that additional covered bus/van storage is needed to protect the District’s investment in these vehicles.

RECOMMENDATION

Based on the process of establishing criteria for purposes of developing and evaluating options, the Planning Committee reached consensus on the following recommendations. These recommendations are listed in their order of priority as follows:

- Accommodate current enrollment/capacity demands at grades 6-8 through a temporary reconfiguration of grade structure to be in effect Fall 2010, recommending grades 5-6 in the Falcon Ridge building. (* See the Growth Model included with Appendix A)

Eagle View: K-4

Middle School: 7-8

High School: 9-12

Raven Stream: K-4

Falcon Ridge: 5-6

This will also allow the CEC building to continue providing excellent value to the community by returning to its current intended role, which includes housing the following District support services:

- District Office
 - District Operations
 - Special Education
 - Community Education
 - Alternative Learning
- Provide a second 650 capacity Middle School for grades 6-8 to open Fall 2014 (Pending enrollment matching projections.) This building should be located adjacent to the existing Eagle View Elementary School. District grade configuration to return to K-5, 6-8, 9-12.
 - Referendum: Fall 2011 or Spring 2012 (Pending enrollment matching projections)
 - Address field availability needs through upgrades at the stadium. The track should be rebuilt, as well as modified to be an "equal quadrant" facility, and artificial turf should be provided at the play field to allow increases in frequency of use for multiple groups/activities. We feel that artificial turf will allow an exponential increase in events/activities scheduled at the stadium compared to natural turf. This will contribute to the alleviation of field availability demands.
 - Pursue land acquisition to address existing middle school site issues and play field shortages.
 - Pursue community partnerships to accomplish the goal of a pool within the District. This should be part of a larger vision to accomplish the goal of a pool within the District.
 - Provide additional, covered, storage for District vehicles. Currently 28 vans and 7 buses remain exposed to the elements. We recommend an addition to the current facility to accommodate these vehicles.

- Invest in appropriate District Support facilities, security demands, and deferred maintenance necessary to support growth and foster quality learning environments. A complete Facility Analysis will be submitted to the Board of Education under separate cover. Deferred maintenance recommendations include:
 - Continue to implement Annual Plan
 - Pursue operational efficiency projects with paybacks of 5-10 years
 - Address items with significant deterioration
 - Address any severe air-quality issues
 - Schedule high cost, life-cycle projects as necessary (i.e. re-roofs)

- Establish future Planning Committees regularly to evaluate actual enrollment vs. projections, assess classroom demands vs. anticipated students, and make appropriate recommendations for future space needs in a timely manner.

APPENDIX A: Growth Model

- Growth Model: Current Facilities (if no action is taken)
- Growth Model: Recommended Strategy

2008 STRATEGIC PLANNING COMMITTEE : DISTRICT GROWTH MODEL

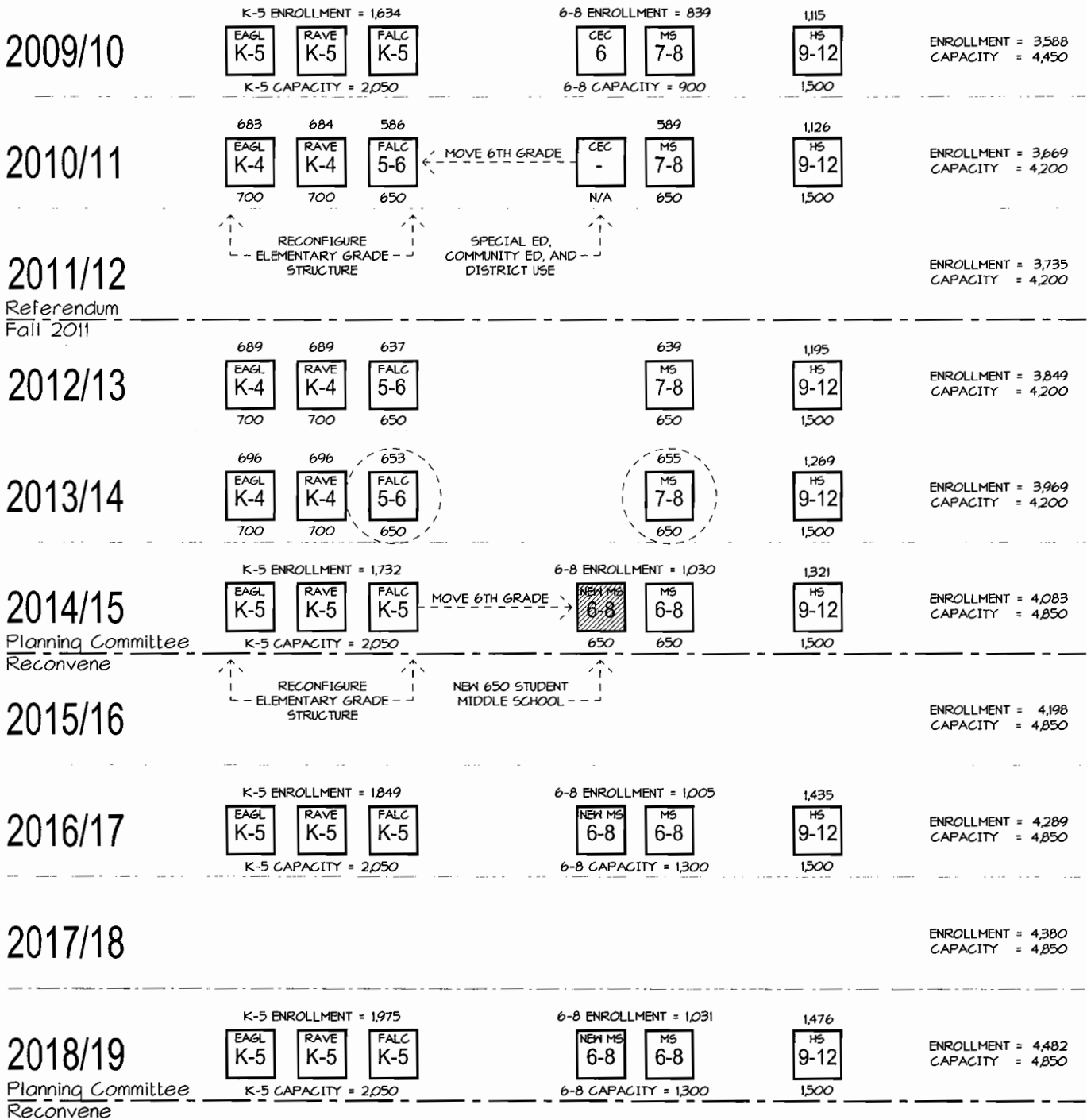
ENROLLMENT:.....XXX GRADES INCLUDED:.....X-X CAPACITY:.....XXX	ELEMENTARY SCHOOL	MIDDLE SCHOOL	HIGH SCHOOL	TOTALS
2009/10	K-5 ENROLLMENT = 1,634 FALC K-5, EAGL K-5, RAVE K-5 K-5 CAPACITY = 2,050	6-8 ENROLLMENT = 839 CEC 6, MS 7-8 6-8 CAPACITY = 900	HS 9-12 1,115 1,500	ENROLLMENT = 3,588 CAPACITY = 4,450
2010/11	K-5 ENROLLMENT = 1,650 FALC K-5, EAGL K-5, RAVE K-5 650 700 700	6-8 ENROLLMENT = 893 CEC 6, MS 7-8 250 650	HS 9-12 1,126 1,500	ENROLLMENT = 3,669 CAPACITY = 4,450
2011/12	K-5 ENROLLMENT = 1,664 FALC K-5, EAGL K-5, RAVE K-5 K-5 CAPACITY = 2,050	6-8 ENROLLMENT = 935 CEC 6, MS 7-8 250 650	HS 9-12 1,136 1,500	ENROLLMENT = 3,735 CAPACITY = 4,450
2012/13	K-5 ENROLLMENT = 1,695 FALC K-5, EAGL K-5, RAVE K-5 650 700 700	6-8 ENROLLMENT = 959 CEC 6, MS 7-8 250 650	HS 9-12 1,195 1,500	ENROLLMENT = 3,849 CAPACITY = 4,450
2013/14	K-5 ENROLLMENT = 1,707 FALC K-5, EAGL K-5, RAVE K-5 K-5 CAPACITY = 2,050	6-8 ENROLLMENT = 993 CEC 6, MS 7-8 250 650	HS 9-12 1,269 1,500	ENROLLMENT = 3,969 CAPACITY = 4,450
2014/15	K-5 ENROLLMENT = 1,732 FALC K-5, EAGL K-5, RAVE K-5 650 700 700	6-8 ENROLLMENT = 1,030 CEC 6, MS 7-8 250 650	HS 9-12 1,321 1,500	ENROLLMENT = 4,083 CAPACITY = 4,450
2015/16	K-5 ENROLLMENT = 1,791 FALC K-5, EAGL K-5, RAVE K-5 K-5 CAPACITY = 2,050	6-8 ENROLLMENT = 1,022 CEC 6, MS 7-8 250 650	HS 9-12 1,385 1,500	ENROLLMENT = 4,198 CAPACITY = 4,450
2016/17	K-5 ENROLLMENT = 1,849 FALC K-5, EAGL K-5, RAVE K-5 650 700 700	6-8 ENROLLMENT = 1,005 CEC 6, MS 7-8 250 650	HS 9-12 1,435 1,500	ENROLLMENT = 4,289 CAPACITY = 4,450
2017/18	K-5 ENROLLMENT = 1,927 FALC K-5, EAGL K-5, RAVE K-5 K-5 CAPACITY = 2,050	6-8 ENROLLMENT = 984 CEC 6, MS 7-8 250 650	HS 9-12 1,469 1,500	ENROLLMENT = 4,380 CAPACITY = 4,450
2018/19	K-5 ENROLLMENT = 1,975 FALC K-5, EAGL K-5, RAVE K-5 650 700 700	6-8 ENROLLMENT = 1,031 CEC 6, MS 7-8 250 650	HS 9-12 1,476 1,500	ENROLLMENT = 4,482 CAPACITY = 4,450

** TEN YEAR ENROLLMENT PROJECTION (PREPARED BY SCHOOL FINANCES.COM) USED FOR PLANNING

INDEPENDENT SCHOOL DISTRICT #721

2008 STRATEGIC PLANNING COMMITTEE : DISTRICT GROWTH MODEL

ENROLLMENT:.....XXX GRADES INCLUDED:..... X-X CAPACITY:.....XXX	ELEMENTARY SCHOOL	MIDDLE SCHOOL	HIGH SCHOOL	TOTALS
--	--------------------------	----------------------	--------------------	---------------



** TEN YEAR ENROLLMENT PROJECTION (PREPARED BY SCHOOL FINANCES.COM) USED FOR PLANNING

APPENDIX B: Estimated Project Costs

New Middle School Costs:

- **650 Student Capacity** **120,000 – 125,000 S.F.**
- **2009 Estimated Project Cost** **\$30.3m - \$31.6m**
- **Anticipated 2012 Project Cost** **\$35m – \$36.5m**
- ***Does not Include Auditorium or Pool***
- ***Does not Include Site Development Costs***

APPENDIX C: Meeting Minutes

- October 7, 2008
- October 28, 2008
- November 18, 2008
- December 16, 2008
- January 13, 2009
- January 27, 2009

M E M O R A N D U M



MINNESOTA OFFICE
305 ST. PETER STREET
ST. PAUL, MINNESOTA 55102
651.227.7773
FAX 651.223.5646
WWW.WOLDAE.COM
MAIL@WOLDAE.COM

TO: Strategic Planning Committee
MINNESOTA
FROM: Linn Bjornrud *LB*
ILLINOIS
MICHIGAN
DATE: October 14, 2008
COLORADO

COMM. NO: 082117

• SHOULD BE UNDER "COMMITTEE MEMBERS"

SUBJECT: Independent School District #721
Strategic Planning Committee Meeting #1 Minutes
October 7, 2008 Meeting Minutes

Attendants:

Committee Members:

Ben Bartusek, Senior Citizens
Ken Bruzelius, Senior Citizens
Sherry Brooks, Elko New Market Parents
Chris Remer, Elko New Market
Jim Friedges, Elko New Market City Council
Steve Bruchman, Arts Council
Mary Drazan, Elementary Teachers
Virginia Lucier Hoyt, Retired Teachers
Julie Dvorak, Parents
Mark Rezac, Parents
Mike Eischens, Knights of Columbus
Marvin Erickson, New Lions Club
Charlie Hatch, Athletics
Nancy Johnson, Lonsdale
Lois Tuma, Lonsdale
Diane Weyrich, Lonsdale Parents
Stephanie Nelson, City of New Prague
Ken Ondich, City of New Prague
Steve Trewartha, New Prague Churches
Amy Trygestad, New Prague Chamber
Tammy Pexa, Ambulance
Doug Schoenecker, Sportsman's Club
Matt Sticha, Secondary Teachers

Resources:

Craig Menozzi, Superintendent
Don Dvorak, Board Member
Larry Pint, Board Member
Bob Reed, Board Member
Dan Pyan, Director of Finance
Colleen Cardenuto, Dir. of Curriculum & Testing
Amy Eich, Community Education Director
Tim Rybak, Director of Operations
• Christa Ingebrand, Operations Executive Asst.
• Julie Martin, Support Staff
• Tom Doig, Secondary Principals
• Pat Pribyl, Elementary Principals
Chuck Kajer, New Prague Times
Linn Bjornrud, Wold Architects and Engineers
Vaughn Dierks, Wold Architects and Engineers

Discussion Topics:

A. Introductions:

1. Committee members introduced themselves and shared their views on outcomes they hoped for from this process.

B. Outcomes Hoped For:

1. A New Middle School
2. Curriculum Advancements
3. Meet District Needs in a Fiscally Responsible Way
4. Foreign Language Curriculum Advancements



Independent School District #721
Strategic Planning Committee Meeting #1 Minutes
October 7, 2008 Meeting Minutes
Page Two

MINNESOTA
ILLINOIS
MICHIGAN
COLORADO


5. Greater Connection/Involvement with Elko New Market Area (Activities, etc.)
 6. Accountability
 7. District/City Partnership
 8. Balance of Arts/Recreation
 9. Efficient Use of Facilities in Slow Economy
 10. Meeting the Needs of Students
 11. A Well Thought Plan Laid Out in an Informative Document
 12. Learn About History, Current Position, and Future of District
 13. Improve Environmental Learning Opportunities
- C. Planning Group Mission:
1. Represent Community
 2. Consensus-based decision-making
 3. Develop needs vs. wants-based criteria
 4. Understanding current District position, and direction for future (existing facilities, enrollment vs. capacity, grade structure, etc.)
 5. Develop a recommendation
 6. Present recommendation to the School Board
- D. Role of Resources:
1. To provide insight/information on discussion topics, including: providing historical perspective, current District position, and future goals of the District.
- E. District Information:
1. A general overview of district information, including facilities statistics, enrollment information, and grade organization was handed out.
- F. Information Requests:
1. A question was raised regarding past planning committees. A copy of the 2002 Planning Committee outcome document was requested to be made available to the group.
- G. Homework:
1. Are there additional subcommittees that should be organized?
 2. Talk to three people in the community: What are the biggest issues facing the District in the coming year(s)?

cc: File 082117
Strategic Planning Committee Resources

DR/ISD_721/082117/min/10-7-08



MINNESOTA OFFICE
 305 ST. PETER STREET
 ST. PAUL, MINNESOTA 55102
 651.227.7773
 FAX 651.223.5646
 WWW.WOLDAE.COM
 MAIL@WOLDAE.COM

TO: Attendants
 MINNESOTA
 FROM: Linn Bjornrud 
 ILLINOIS
 MICHIGAN
 COLORADO
 DATE: November 4, 2008
 COMM. NO: 082117

SUBJECT: Independent School District #721
 Strategic Planning Committee Meeting #2
 October 28, 2008 Meeting Minutes

Attendants:

Committee Members:

Ben Bartusek, Senior Citizens
 Ken Bruzelius, Senior Citizens
 Chris Remer, Elko New Market
 Jim Friedges, Elko New Market City Council
 Steve Bruchman, Arts Council
 Mary Drazan, Elementary Teachers
 Julie Dvorak, Parents
 Mark Rezac, Parents
 Mike Eischens, Knights of Columbus
 Marvin Erickson, New Lions Club
 Charlie Hatch, Athletics
 Nancy Johnson, Lonsdale
 Lois Tuma, Lonsdale
 Diane Weyrich, Lonsdale Parents
 Stephanie Nelson, City of New Prague
 Ken Ondich, City of New Prague
 Amy Trygestad, New Prague Chamber
 Tammy Pexa, Ambulance
 Doug Schoenecker, Sportsman's Club
 Matt Sticha, Secondary Teachers
 Julie Martin, Support Staff
 Tom Doig, Secondary Principals
 Pat Pribyl, Elementary Principals

Resources:

Craig Menozzi, Superintendent
 Don Dvorak, Board Member
 Larry Pint, Board Member
 Bob Reed, Board Member
 Dan Pyan, Director of Finance
 Colleen Cardenuto, Dir. of Curriculum & Testing
 Amy Eich, Community Education Director
 Tim Rybak, Director of Operations
 Chuck Kajer, New Prague Times
 Linn Bjornrud, Wold Architects and Engineers
 Vaughn Dierks, Wold Architects and Engineers

Absentees:

Sherry Brooks, Elko New Market Parents
 Virginia Lucier Hoyt, Retired Teachers
 Steve Trewartha, New Prague Churches
 Christa Ingebrand, Operations Executive Asst.

Discussion Topics:

- A. Curriculum Report: Colleen Cardenuto
1. Elementary Curriculum Overview
 - a. Colleen gave brief overview of subjects taught, technology considerations, and space needs for elementary curriculum.
 2. Middle School/High School Curriculum Overview
 - a. Colleen gave an overview of updated state graduation requirements, technology considerations, and space needs. She stressed the state's emphasis on S.T.E.M. (Science, Technology, Engineering, Math).



Independent School District #721
Strategic Planning Committee Meeting #2
October 28, 2008 Meeting Minutes
Page Two

MINNESOTA
ILLINOIS
MICHIGAN
COLORADO

3. State testing requirements were discussed at length.
 - a. Colleen described the process that the District undertakes to remediate students who are struggling to pass tests.
 - b. The facility needs to accommodate testing , which would include adequate technology and breakout spaces.
- B. Review of 2002 Planning Study: Bob gave a summary of the 2002 study outcomes.
 1. District would consider at least two (2) sites for future acquisition.
 2. Secure site in eastern portion of District for future middle school.
 3. Build two K-6 elementary schools (District opted to preserve 6-8 middle school grade organization and build K-5 elementary schools instead).
 4. Add on to high school to increase capacity to 1,500.
- C. Understanding What We Have, Who We Are.
 1. Existing facilities conditions:
 - a. Wold introduced the facility analysis currently being developed.
 - b. This document will be reviewed with District personnel prior to finalization.
 2. District owned sites/fields
 - a. Wold distributed a diagram showing sites owned by the District and adjacencies of these sites. These adjacencies show that the potential for a contiguous downtown campus exists.
 3. Comparison to peers
 - a. Wold provided a comparison breakdown of District information compared to other Districts.
- D. Form Subcommittees
 1. What subcommittees are needed?
 - a. Grade structure (and associated options)
 - b. Athletics (and sites)
 - c. Fine Arts
 - d. Tim Rybak to give update on 5 year technology plan at future meeting.
- E. Tours: Monday, November 10, 2008 at 6:00 p.m.
 1. Meet at Middle School

Next Meeting: November 18, 2008 at 6:30 p.m. at Falcon Ridge

cc: Absentees
Margaret Sticha, Superintendent Secretary
File 082117

DP/ISD_721/082117/min/10-28-08



MINNESOTA OFFICE
 305 ST. PETER STREET
 ST. PAUL, MINNESOTA 55102
 651.227.7773
 FAX 651.223.5646
 WWW.WOLDAE.COM
 MAIL@WOLDAE.COM

TO: Attendants
 MINNESOTA
 ILLINOIS FROM: Linn Bjornrud VB
 MICHIGAN
 COLORADO DATE: November 26, 2008

COMM. NO: 082117

SUBJECT: Independent School District #721
 Strategic Planning Committee Meeting #3
 November 18, 2008 Meeting Minutes

Attendants:

Committee Members:

Ben Bartusek, Senior Citizens
 Ken Bruzelius, Senior Citizens
 Chris Remer, Elko New Market
 Jim Friedges, Elko New Market City Council
 Steve Bruchman, Arts Council
 Mary Drazan, Elementary Teachers
 Julie Dvorak, Parents
 Mark Rezac, Parents
 Mike Eischens, Knights of Columbus
 Marvin Erickson, New Lions Club
 Charlie Hatch, Athletics
 Nancy Johnson, Lonsdale
 Lois Tuma, Lonsdale
 Diane Weyrich, Lonsdale Parents
 Stephanie Nelson, City of New Prague
 Ken Ondich, City of New Prague
 Amy Trygestad, New Prague Chamber
 Tammy Pexa, Ambulance
 Doug Schoenecker, Sportsman's Club
 Matt Sticha, Secondary Teachers
 Julie Martin, Support Staff
 Tom Doig, Secondary Principals
 Pat Pribyl, Elementary Principals
 Sherry Brooks, Elko New Market Parents
 Virginia Lucier Hoyt, Retired Teachers
 Steve Trewartha, New Prague Churches
 Christa Ingebrand, Operations Executive Asst.

Resources:

Craig Menozzi, Superintendent
 Don Dvorak, Board Member
 Larry Pint, Board Member
 Bob Reed, Board Member
 Dan Pyan, Director of Finance
 Colleen Cardenuto, Dir. of Curriculum & Testing
 Amy Eich, Community Education Director
 Tim Rybak, Director of Operations
 Chuck Kajer, New Prague Times
 Linn Bjornrud, Wold Architects and Engineers
 Vaughn Dierks, Wold Architects and Engineers

Discussion Topics:

- A. Central Education Campus: 6th Grade
 1. Middle School Principal Tim Dittberner provided insight into the current 6th Grade utilization of the CEC Building and movement between middle school and CEC.



Independent School District #721
Strategic Planning Committee **Meeting #3**
November 18, 2008 Meeting Minutes
Page Two

MINNESOTA
ILLINOIS
MICHIGAN
COLORADO

- B. Enrollment Projections: Tim Rybak
1. Tim presented the findings of a study conducted by School Finances, which looked at projections of enrollment through 2019.
 2. The study indicated that enrollment is expected to have a small amount of growth during the next ten years, but at a much more gradual rate than has been experienced in the last 10 years. The majority of this growth is not expected to be realized in the near future.
- C. Capacity of Facilities
1. Wold presented capacity study diagrams that confirmed the district's stated building capacities.
- D. Enrollment vs. Capacity
1. Projected enrollment does not appear to approach district capacity.
 2. This indicates that District needs likely will not be driven by capacity issues alone.
- E. Facility Needs vs. Facility Wants
1. Wold described the importance of defining "needs" of the District and "wants".
 2. Committee members shared "needs and wants" items received from community members.
 - Grades 6-8 should be in one building instead of two.
 - Determine a use for vacated facilities if new construction takes place.
 - Justify any additional building with realized enrollment growth to avoid overbuilding.
 - Address student travel between middle school and CEC Building.
 - Increase amount of outdoor play areas.
 - Increase amount of bus/van storage.
 - Address reported safety issues at football field.
 - Build a new pool
 - Build a new middle school.
 - Provide a community center.
 - Improve the agriculture offerings.
 - Special Education space improvements/expansion.
 3. At the next meeting, we will decide what are "needs" and what are "wants", so that solution criteria can be developed.

Next Meeting: December 16, 2008 at 6:30 p.m. at Falcon Ridge Media Center

cc: Absentees
Margaret Sticha, Superintendent Secretary
File 082117

DP/ISD_721/082117/min/11-18-08

M E M O R A N D U M



MINNESOTA OFFICE
305 ST. PETER STREET
ST. PAUL, MINNESOTA 55102
651.227.7773
FAX 651.223.5646
WWW.WOLDAE.COM
MAIL@WOLDAE.COM

TO: Attendants
FROM: Linn Bjornrud **LB**
DATE: December 22, 2008

COMM. NO: 082117

SUBJECT: Independent School District #721
Strategic Planning Committee Meeting #4
December 16, 2008 Meeting Minutes

Attendants:

Committee Members:

Ben Bartusek, Senior Citizens
Chris Remer, Elko New Market
Steve Bruchman, Arts Council
Julie Dvorak, Parents
Mark Rezac, Parents
Mike Eischens, Knights of Columbus
Marvin Erickson, New Lions Club
Charlie Hatch, Athletics
Nancy Johnson, Lonsdale
Lois Tuma, Lonsdale
Diane Weyrich, Lonsdale Parents
Ken Ondich, City of New Prague
Doug Schoenecker, Sportsman's Club
Matt Sticha, Secondary Teachers
Julie Martin, Support Staff
Tom Doig, Secondary Principals
Pat Pribyl, Elementary Principals
Virginia Lucier Hoyt, Retired Teachers
Christa Ingebrand, Operations Executive Asst.

Resources:

Craig Menozzi, Superintendent
Don Dvorak, Board Member
x Larry Pint, Board Member
Bob Reed, Board Member
Dan Pyan, Director of Finance
Amy Eich, Community Education Director
Tim Rybak, Director of Operations
Chuck Kajer, New Prague Times
Margaret Sticha, Superintendent Secretary
y Jerry Walerius, Board Member
v Marty Beckius, Board Member
y Denny Havlicek, Board Member
Linn Bjornrud, Wold Architects and Engineers
Vaughn Dierks, Wold Architects and Engineers

Absentees:

Committee Members:

Ken Bruzelius, Senior Citizens
Jim Friedges, Elko New Market City Council
Mary Drazan, Elementary Teachers
Stephanie Nelson, City of New Prague
Amy Trygestad, New Prague Chamber
Tammy Pexa, Ambulance
Sherry Brooks, Elko New Market Parents
Steve Trewartha, New Prague Churches

Resources:

Colleen Cardenuto, Dir. of Curriculum & Testing
y Dan Carlson, Board Member

Discussion Topics: Direction of Needs and Wants

A. Falcon Ridge Elementary School Report: Dr. Barbara Wilson, Principal



MINNESOTA
ILLINOIS
MICHIGAN
COLORADO

1. Principal Wilson briefly presented information on the Falcon Ridge Facility conditions.
- B. Subcommittee Report: Athletics/Site Acquisition
 1. The group presented their findings regarding needs and wants for the following items:
 - a. General Storage (more space)
 - b. Athletic Fields (more)
 - c. Land Acquisition
 - d. Stadium Upgrades
 - e. Bus Garage (more covered parking)
 - f. Swimming Pool
 - g. Tennis Court Improvements
 - h. Additional Ice Skating Rink
 2. Information from this presentation will be addressed in the form of solution criteria in the attached "Consensus Statements" draft.
- C. Subcommittee Report: Fine Arts
 1. The group presented their findings regarding needs and wants for the following items:
 - a. Storage (more space)
 - b. Rehearsal space (more requested)
 2. Information from this presentation will be addressed in the form of solution criteria in the attached "Consensus Statements" draft.
- D. Firm Development of Criteria
 1. Wold presented a first draft of "Consensus Statements" created from discussions and findings that have taken place in meetings to date.
 2. The group discussed these items and potential revisions needed for consensus.
- E. Homework: Review "Consensus Statements."
 1. Committee members should review revised consensus statements. Come to the next meeting with comments, items that may not be addressed, or items that you do not agree with.
 2. At the next meeting we will confirm the "Consensus Statements" and discuss which items are "needs" and which are "wants." This will allow the group to prioritize these items.

Next Meeting: January 13, 2009 at 6:30 p.m. at Falcon Ridge Media Center

Enclosure: "Consensus Statements" (Draft)

cc: Absentees
File 082117

DP/ISD_721/082117/min/11-18-08

M E M O R A N D U M



MINNESOTA OFFICE
305 ST. PETER STREET
ST. PAUL, MINNESOTA 55102
651.227.7773
FAX 651.223.5646
WWW.WOLDAE.COM
MAIL@WOLDAE.COM

TO: Attendants
MINNESOTA FROM: Linn Bjornrud *LB*
ILLINOIS
MICHIGAN DATE: January 22, 2009
COLORADO
COMM. NO: 082117

SUBJECT: Independent School District #721
Strategic Planning Committee Meeting #5
January 13, 2009

Attendants:

Committee Members:

Ben Bartusek, Senior Citizens
Julie Dvorak, Parents
Mike Eischens, Knights of Columbus
Marvin Erickson, New Lions Club
Charlie Hatch, Athletics
Nancy Johnson, Lonsdale
Diane Weyrich, Lonsdale Parents
Doug Schoenecker, Sportsman's Club
Matt Sticha, Secondary Teachers
Julie Martin, Support Staff
Pat Pribyl, Elementary Principals
Virginia Lucier Hoyt, Retired Teachers
Jim Friedges, Elko New Market City Council
Mary Drazan, Elementary Teachers
Amy Trygestad, New Prague Chamber

Resources:

Craig Menozzi, Superintendent
Don Dvorak, Board Member
Larry Pint, Board Member
Bob Reed, Board Member
Amy Eich, Community Education Director
Tim Rybak, Director of Operations
Margaret Sticha, Superintendent Secretary
Linn Bjornrud, Wold Architects and Engineers
Vaughn Dierks, Wold Architects and Engineers

Absentees:

Committee Members:

Chris Remer, Elko New Market
Steve Bruchman, Arts Council
Mark Rezac, Parents
Lois Tuma, Lonsdale
Ken Ondich, City of New Prague
Tom Doig, Secondary Principals
Christa Ingebrand, Operations Executive Asst.
Ken Bruzelius, Senior Citizens
Stephanie Nelson, City of New Prague
Tammy Pexa, Ambulance
Sherry Brooks, Elko New Market Parents
Steve Trewartha, New Prague Churches

Resources:

Dan Pyan, Director of Finance
Chuck Kajer, New Prague Times
Jerry Walerius, Board Member
Marty Beckius, Board Member
Denny Havlicek, Board Member
Colleen Cardenuto, Dir. of Curriculum & Testing
Dan Carlson, Board Member



MINNESOTA
ILLINOIS
MICHIGAN
COLORADO

Discussion Topics:

A. Firm Development of Criteria: Review of consensus statements.

1. Grade structure flexibility was discussed and the group reached consensus that the 8th grade should not be moved into the high school (to address middle school capacity strains.)
2. It was noted that 5th grade was acceptable as part of a middle school model, but 6th grade may not be acceptable in an elementary.
3. Bob Reed added that previous planning groups recommended that 6th grade not be included in elementary setting.
4. The group confirmed that pedestrian travel between the CEC and the middle school is not ideal, and that safety concerns will remain until modifications are made.
5. Ventilation standards were discussed, but the group decided that until existing buildings' ventilation rates were measured, it would be difficult to assess the priority level of this consensus statement.
6. Replacement of poor performing windows was confirmed as a high priority need for the District due to potential energy savings.
7. The group agreed that the current middle school site is undersized. Wold explained the Department of Education guideline requirements and the Review and Comment process required to modify/add on to educational buildings.
8. Consensus was reached that the District should pursue site acquisition when opportunities present themselves (to address M.S. site size and field shortages).
9. The group concluded that capacity issues at the middle school level currently exist, but building now was not a viable option. They also decided that raising class sizes was not recommended.

B. Preliminary Options Discussion

1. Wold presented growth models, showing strategies that would postpone the capacity strains at the middle school level. This would allow the District the time needed to execute a plan to address capacity issues.
2. The group agreed that a new middle school would need to be built to address this capacity strain.
3. The group also agreed that the appropriate location for a middle school would be the New Market (Eagle View) site that is already owned by the District.
4. Consensus was reached that Option 1 presented was the recommended strategy to address capacity needs. This option created two K-4 buildings (Eagle View, Raven Stream), a 5-6 facility (Falcon Ridge), and construction of a new middle school when the determined enrollment "trigger point" is reached.
5. The group discussed the size of a new middle school. One option was to build a 400 student building with the ability to add on in the future as needed. The other option was to build a 650-700 student building, potentially including grades 5-8. Advantages to building a larger building up front would include cost savings. These cost savings would be realized when compared to adding on to a 400 student building after "x" amount of years of inflation.

Next Meeting: Tuesday, January 27, 2009 at 6:30 p.m., Falcon Ridge Media Center

cc: File 082117

DP/ISD_721/082117/min/1-13-09



MINNESOTA OFFICE
 305 ST. PETER STREET
 ST. PAUL, MINNESOTA 55102
 651.227.7773
 FAX 651.223.5646
 WWW.WOLDAE.COM
 MAIL@WOLDAE.COM

MINNESOTA TO: Attendants
 ILLINOIS FROM: Linn Bjornrud *LB*
 MICHIGAN
 COLORADO DATE: February 4, 2009
 COMM. NO: 082117

SUBJECT: Independent School District #721
 Strategic Planning Committee Meeting #6
 January 27, 2009 Meeting Minutes

Attendants:

Committee Members:

Julie Dvorak, Parents
 Marvin Erickson, New Lions Club
 Charlie Hatch, Athletics
 Diane Weyrich, Lonsdale Parents
 Doug Schoenecker, Sportsman's Club
 Matt Sticha, Secondary Teachers
 Julie Martin, Support Staff
 Pat Pribyl, Elementary Principals
 Virginia Lucier Hoyt, Retired Teachers
 Jim Friedges, Elko New Market City Council
 Mary Drazan, Elementary Teachers
 Amy Trygestad, New Prague Chamber
 Chris Remer, Elko New Market
 Steve Bruchman, Arts Council
 Mark Rezac, Parents
 Lois Tuma, Lonsdale
 Ken Ondich, City of New Prague
 Ken Bruzelius, Senior Citizens

Resources:

Craig Menozzi, Superintendent
 Don Dvorak, Board Member
 Larry Pint, Board Member
 Jerry Walerius, Board Member
 Denny Havlicek, Board Member
 Amy Eich, Community Education Director
 Tim Rybak, Director of Operations
 Linn Bjornrud, Wold Architects and Engineers
 Vaughn Dierks, Wold Architects and Engineers

Absentees:

Committee Members:

Tom Doig, Secondary Principals
 Christa Ingebrand, Operations Executive Asst.
 Stephanie Nelson, City of New Prague
 Tammy Pexa, Ambulance
 Sherry Brooks, Elko New Market Parents
 Steve Trewartha, New Prague Churches
 Ben Bartusek, Senior Citizens
 Mike Eischens, Knights of Columbus
 Nancy Johnson, Lonsdale

Resources:

Dan Pyan, Director of Finance
 Chuck Kajer, New Prague Times
 Marty Beckius, Board Member
 Bob Reed, Board Member
 Colleen Cardenuto, Dir. of Curriculum & Testing
 Dan Carlson, Board Member
 Margaret Sticha, Superintendent Secretary



MINNESOTA
ILLINOIS
MICHIGAN
COLORADO

Discussion Topics:

- A. Review of Previous Discussions
 - 1. Confirmation of Consensus
 - a. Middle school capacity strains exist.
 - b. Building now is not a viable option.
 - c. Class sizes should not be increased
 - 2. New Middle School Costs (informational use only)
 - a. Current (2009) construction and project estimated costs were analyzed.
- B. Recommendation Consensus
 - 1. Middle School Capacity Issues
 - a. Reconfigure grade organization to delay capacity strain as follows: (K-4, 5-6, 7-8, 9-12).
 - b. Construct new middle school in New Market. Return grade organization to ideal configuration (K-5, 6-8, 9-12).
 - 2. Deferred Maintenance Recommendations
 - a. Subjective recommendations are preferred to allow board discretion within given parameters.
 - b. Allow board to make decisions based on achieving recommended outcome rather than specific means and methods.
 - 3. Fields/Athletics Recommendations
 - a. Rebuilding track is a high-priority need.
 - b. Synthetic turf at the stadium is a high-priority need.
 - c. This would take the place of the purchase and development of land for multiple fields.
 - 4. Pool Recommendations
 - a. An indoor pool is a "want," but a very high-priority "want."
 - b. Should be pursued as a community partnership.
 - 5. Bus Garage Recommendations
 - a. Expansion of the bus garage is a high-priority "want."
 - 6. Storage Recommendations
 - a. The district should analyze storage yearly to determine most cost-effective strategies.
 - 7. Land Acquisition Recommendations
 - a. District should pursue land as available.
- C. Next Steps
 - 1. Volunteers for board presentation
 - 2. Draft recommendation document.
 - 3. Present recommendation to Board of Education on February 23, 2009.

cc: Absentees

DP/ISD_721/082117/min/1-27-09

APPENDIX D: Building Capacities

- Eagle View Elementary School
- Raven Stream Elementary School
- Falcon Ridge Elementary School
- Central Education Campus
- Middle School
- High School

DISTRICT CAPACITY SUMMARY / INVENTORY

<u>Building</u>	<u>Grade Organization</u>	<u>Capacity</u>	<u>Enrollment (Fall '08)</u>
Falcon Ridge E.S	K-5	650	515
Eagle View E.S.	K-5	700	535
Raven Stream E.S.	K-5	700	575
CEC / Intermediate	MS Overflow (6)	250	Incl. in MS
Middle School	6-8	650	774
High School	9-12	1,500	1,139
TOTAL	K-12	4,450 Students	3,538 Students

<u>Building</u>	<u>Year(s) Built</u>	<u>Gross S.F.</u>	<u>Site Size (Acres)</u>
Falcon Ridge E.S	1968, 1991	86,770 S.F.	+/- 20 Acres
Eagle View E.S.	2006	94,800 S.F.	+/- 60 Acres
Raven Stream E.S.	2006	90,000 S.F.	+/- 25 Acres
CEC / Intermediate	1923, 1961	123,997 S.F.	+/- 14 Acres
Middle School	1976	151,920 S.F.	+/- 07 Acres
High School	1998, 2007	311,825 S.F.	+/- 53 Acres
TOTAL	N/A	859,312 S.F.	N/A

**FALCON RIDGE ELEMENTARY SCHOOL
(GRADES K-5)**

2008/2009 "DRAFT" CAPACITY

5 Stations (Kindergarten)
X 20 Students / Station
= 100 Students

8 Stations (Grades 1-2)
X 22 Students / Station
= 176 Students

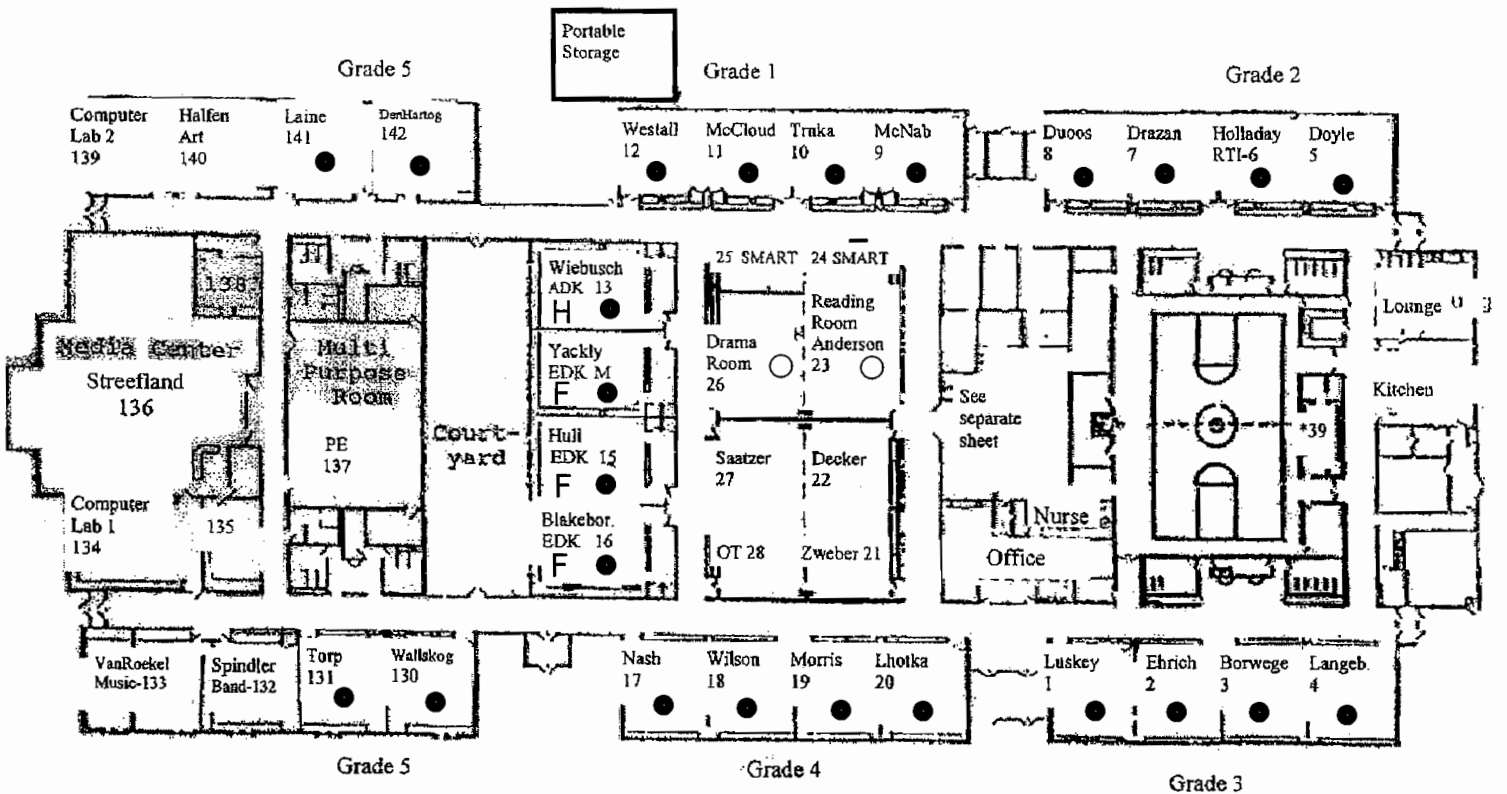
12 Stations (Grades 3-5)
X 25 Students / Station
= 300 Students

Total Draft Capacity = 576 Students

"DESIGN" CAPACITY

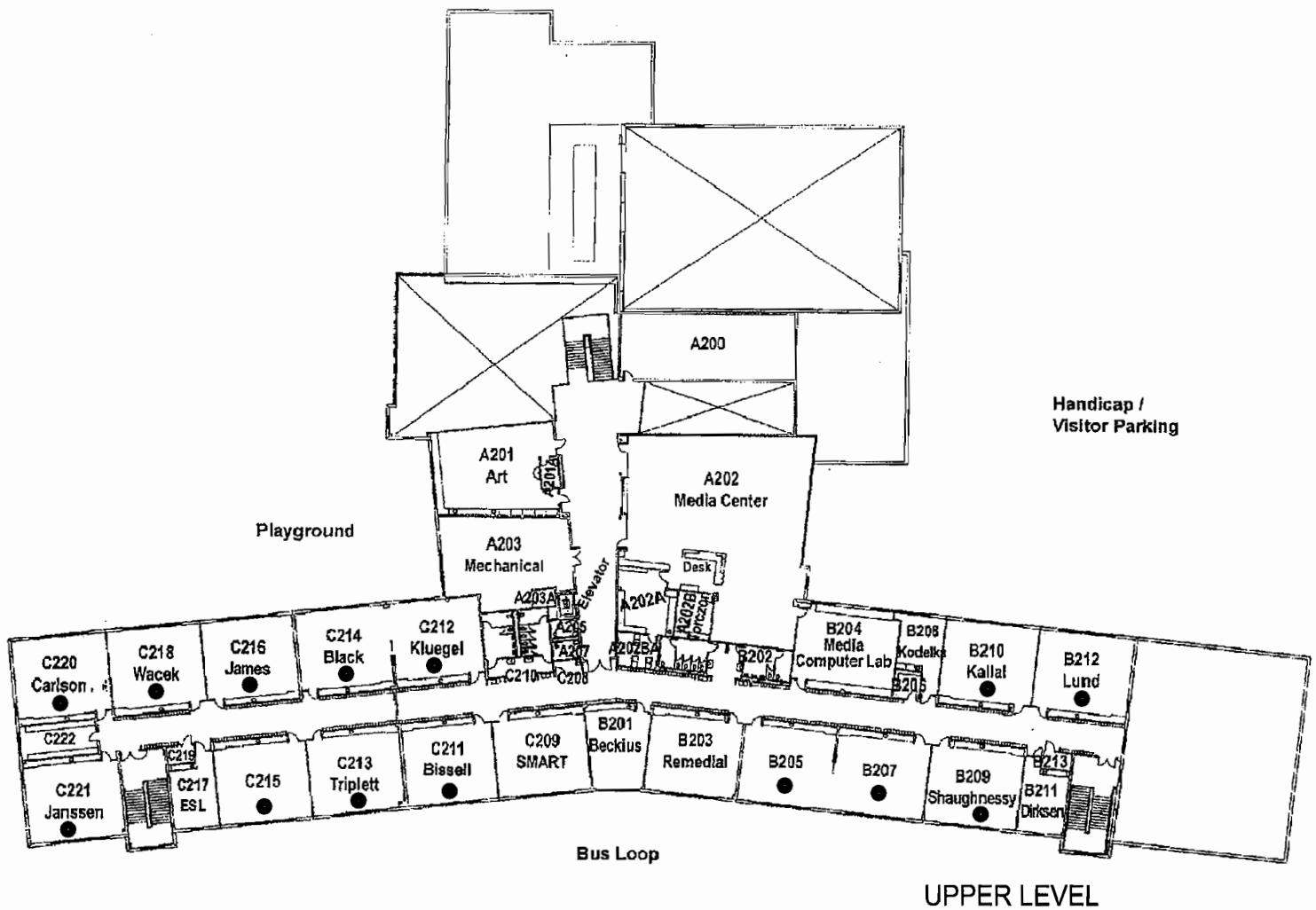
26 Stations
X 25 Students / Station

Capacity = 650 Students



MAIN LEVEL

EAGLE VIEW ELEMENTARY SCHOOL
(GRADES K-5)



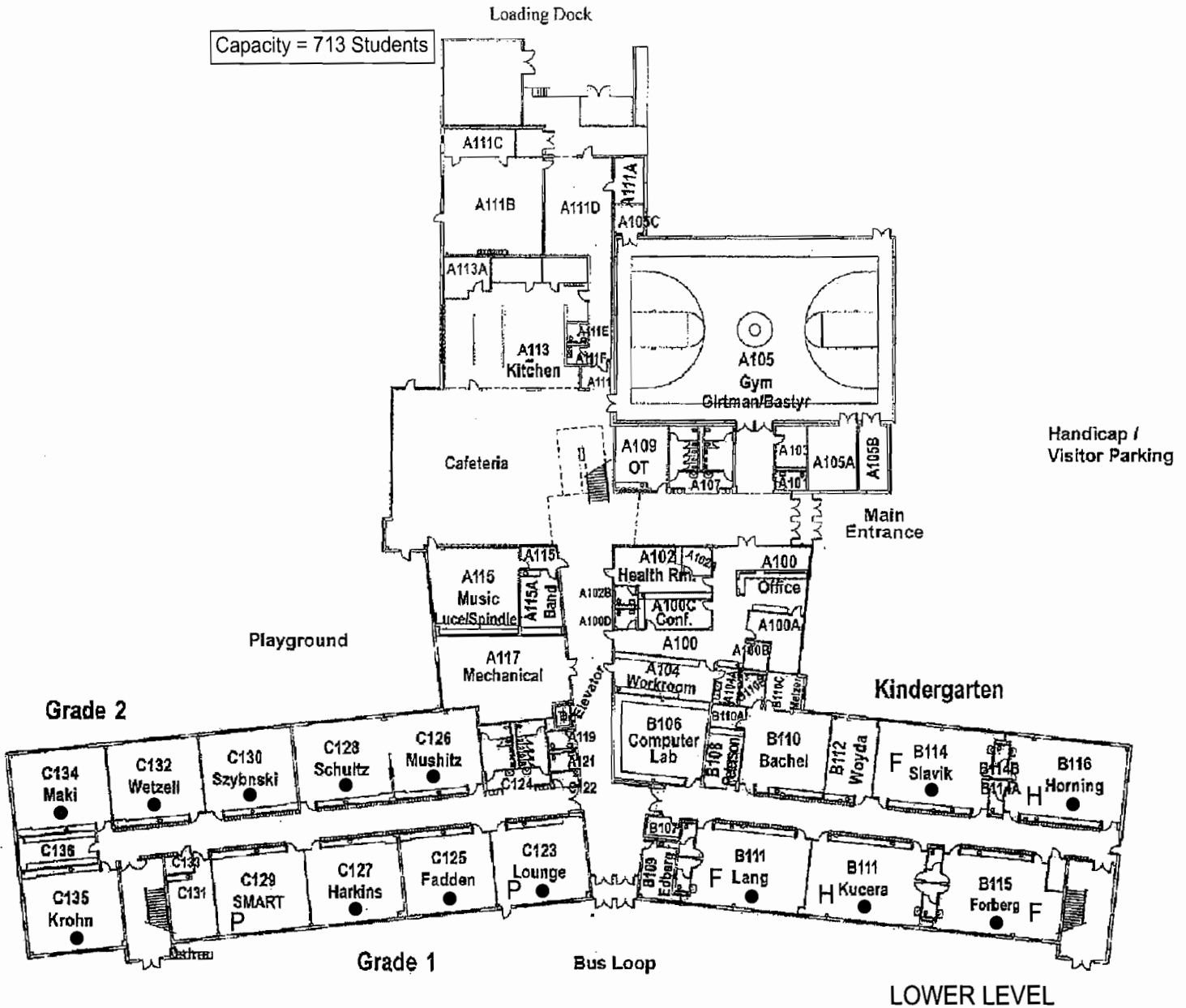
**RAVEN STREAM ELEMENTARY SCHOOL
(GRADES K-5)**

2008/2009 "DRAFT" CAPACITY

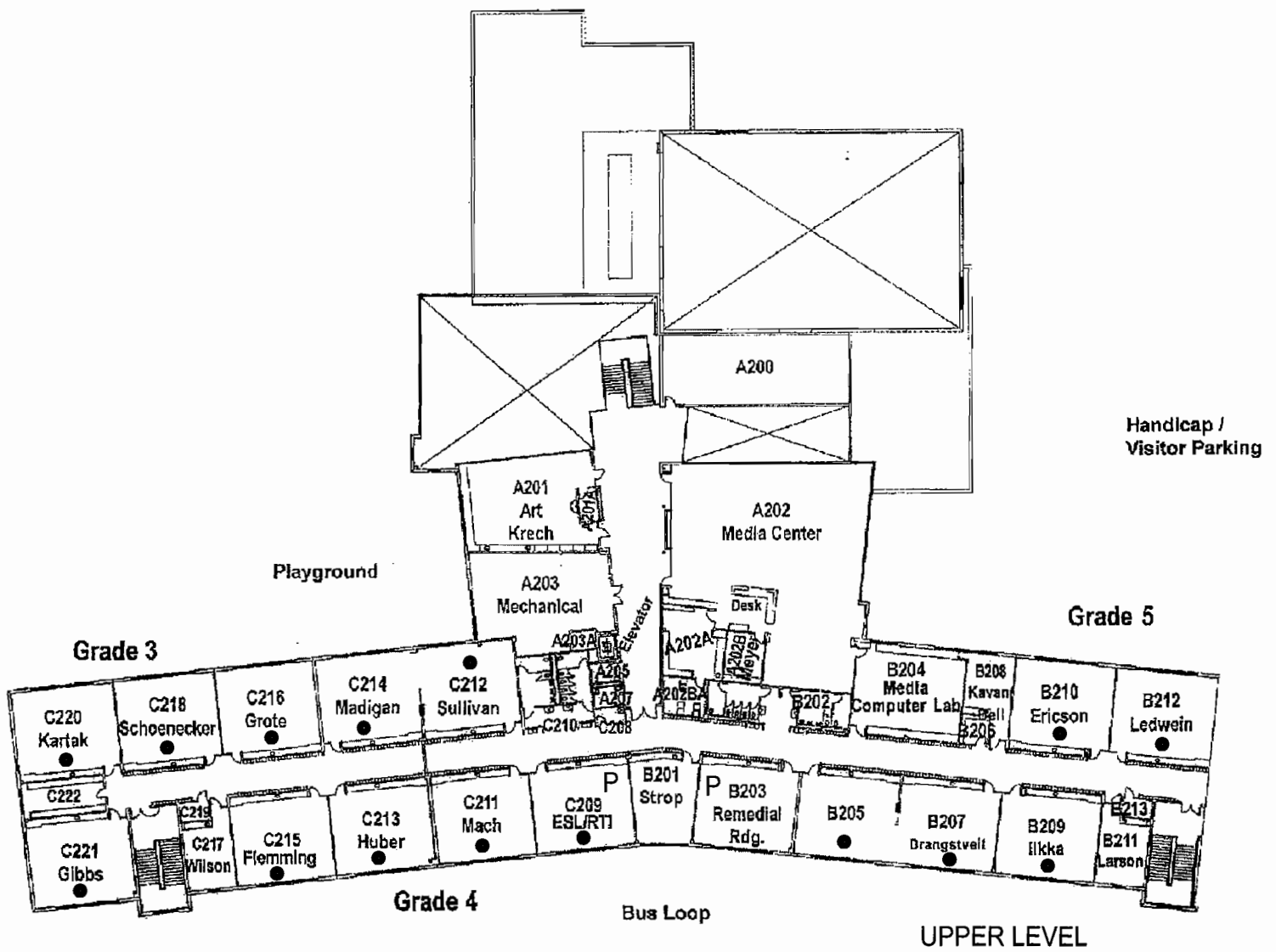
7 Teaching Stations (Kindergarten)
X 20 Students / Station
= 140 Students

9 Stations (Grades 1-2)
X 22 Students / Station
= 198 Students

15 Stations (Grades 3-5)
X 25 Students / Station
= 375 Students



**RAVEN STREAM ELEMENTARY SCHOOL
(GRADES K-5)**

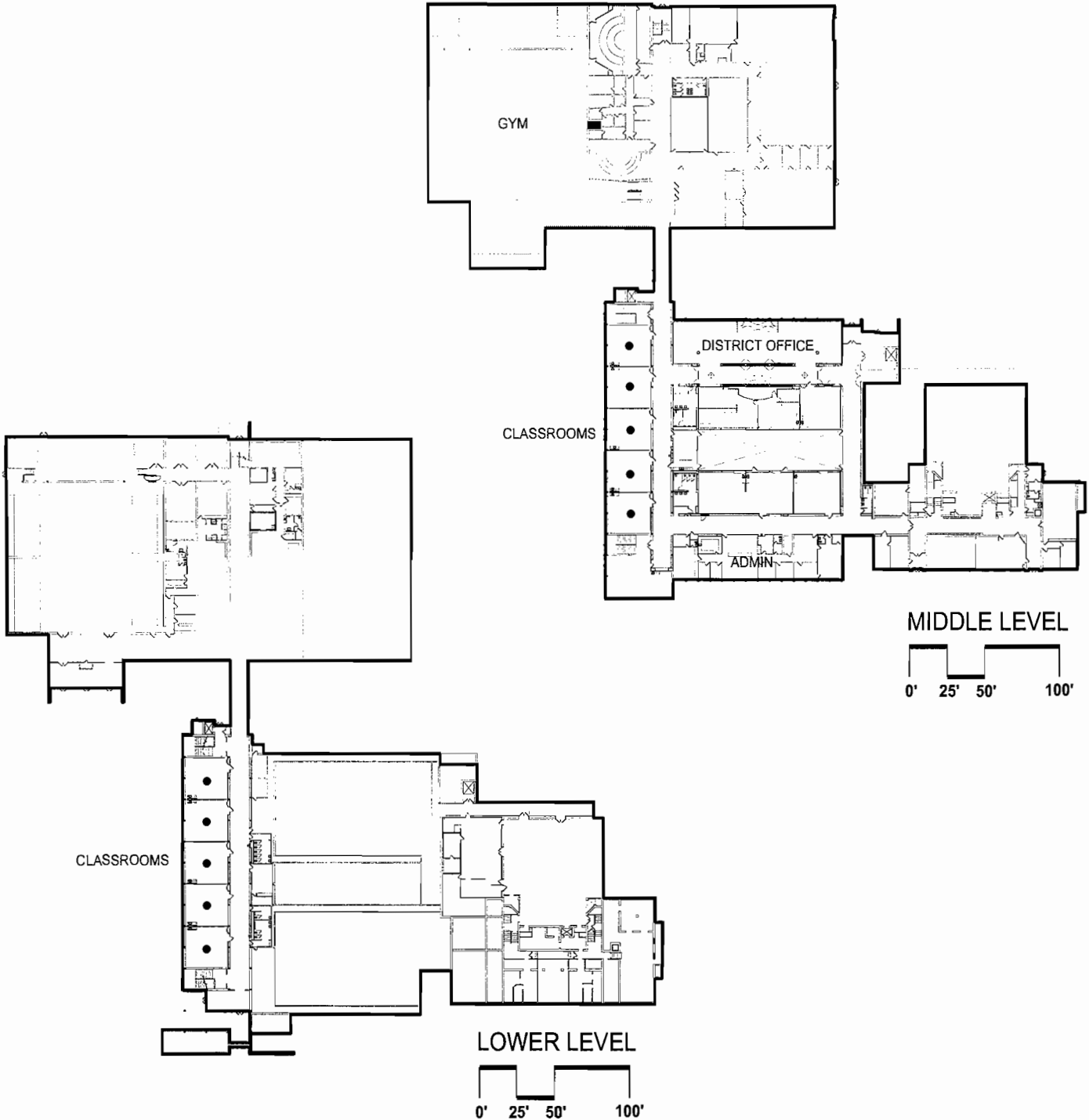


**CENTRAL EDUCATION CENTER
(6TH GRADE)**

2008/2009 "DRAFT" CAPACITY

10 Teaching Stations
x 25 Students / Station

Capacity = 250 Students

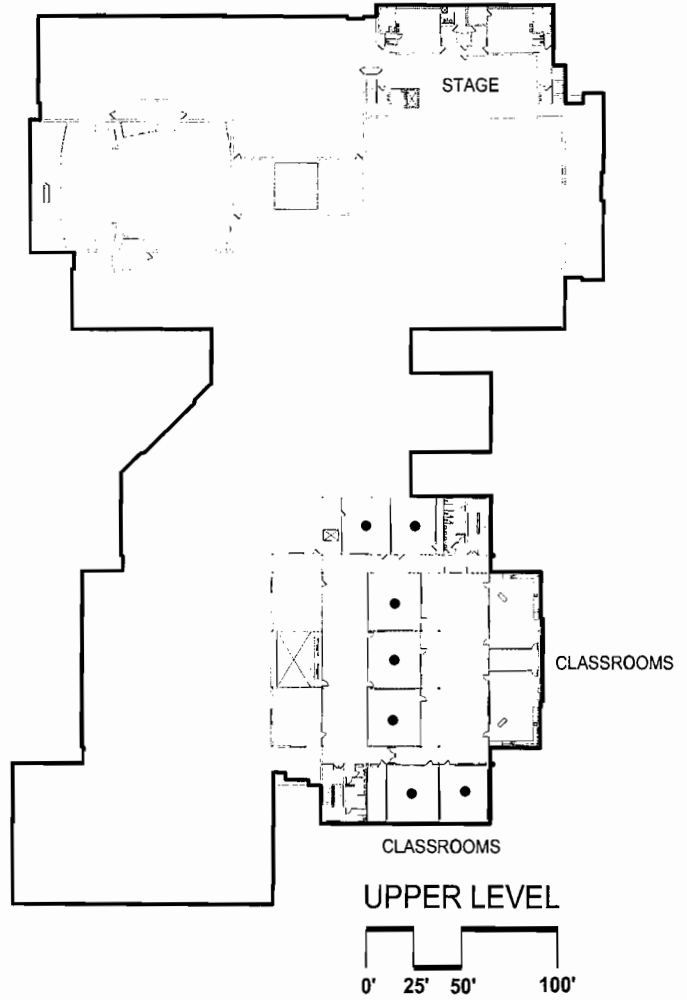
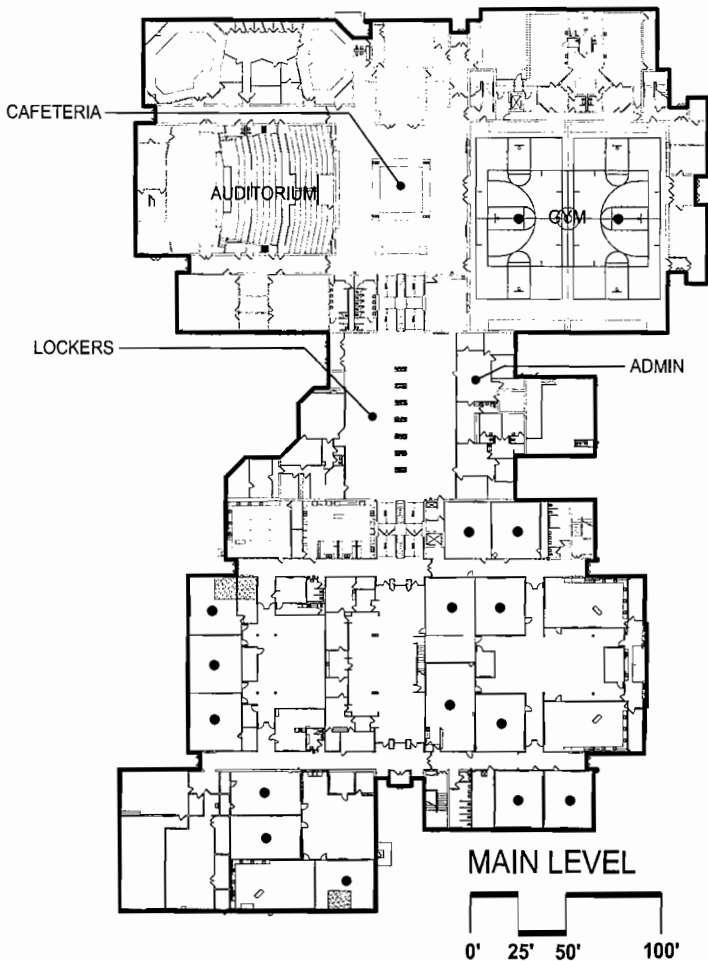


**NEW PRAGUE MIDDLE SCHOOL
(GRADES 6-8)**

2008/2009 "DRAFT" CAPACITY

23 Stations
X 28 Students / Station

Capacity = 650 Students

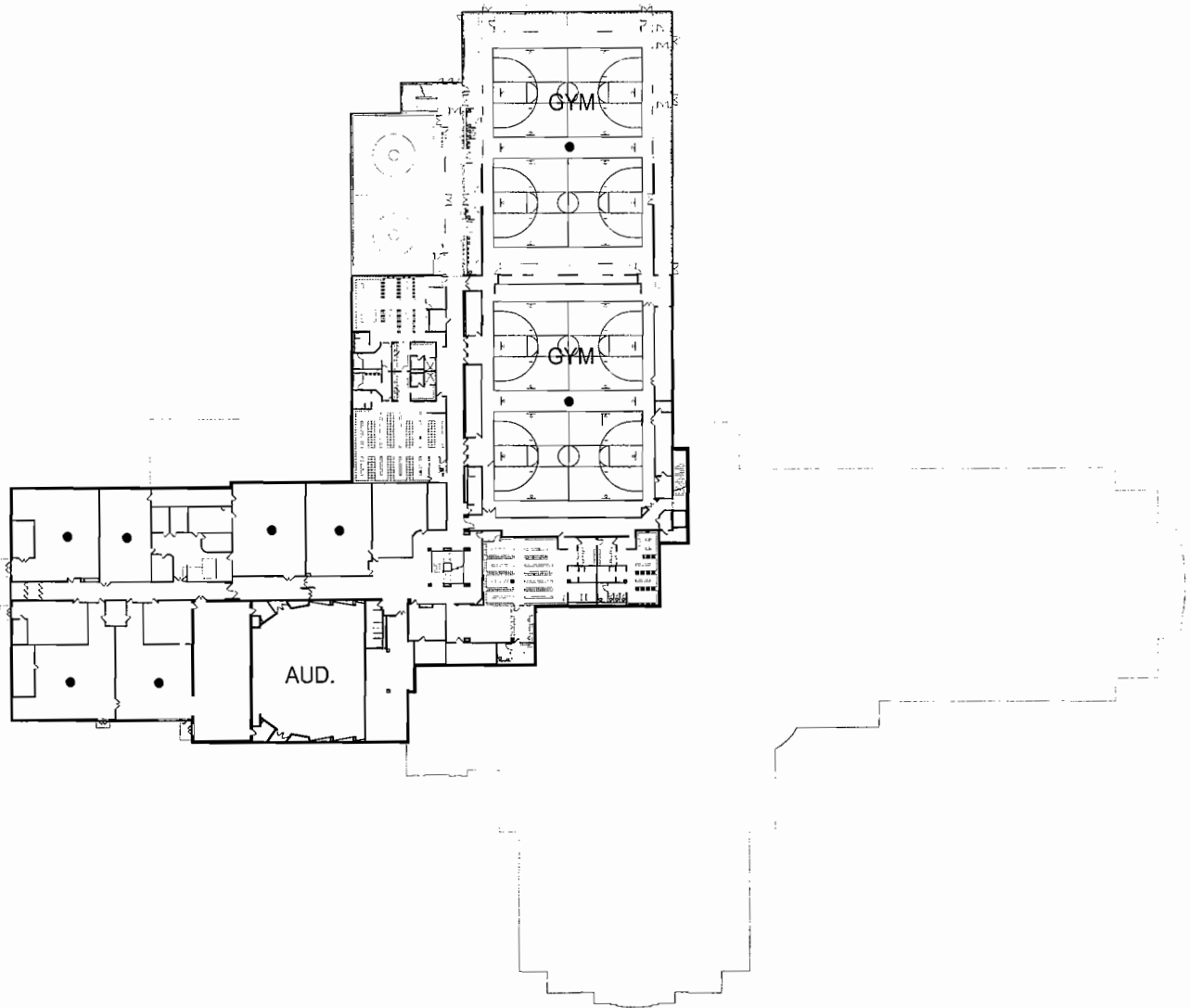


**NEW PRAGUE HIGH SCHOOL
(GRADES 9-12)**

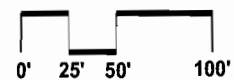
2008/2009 "DRAFT" CAPACITY

- 62 Stations
- X 30 Students / Station
- X 80% Utilization Factor

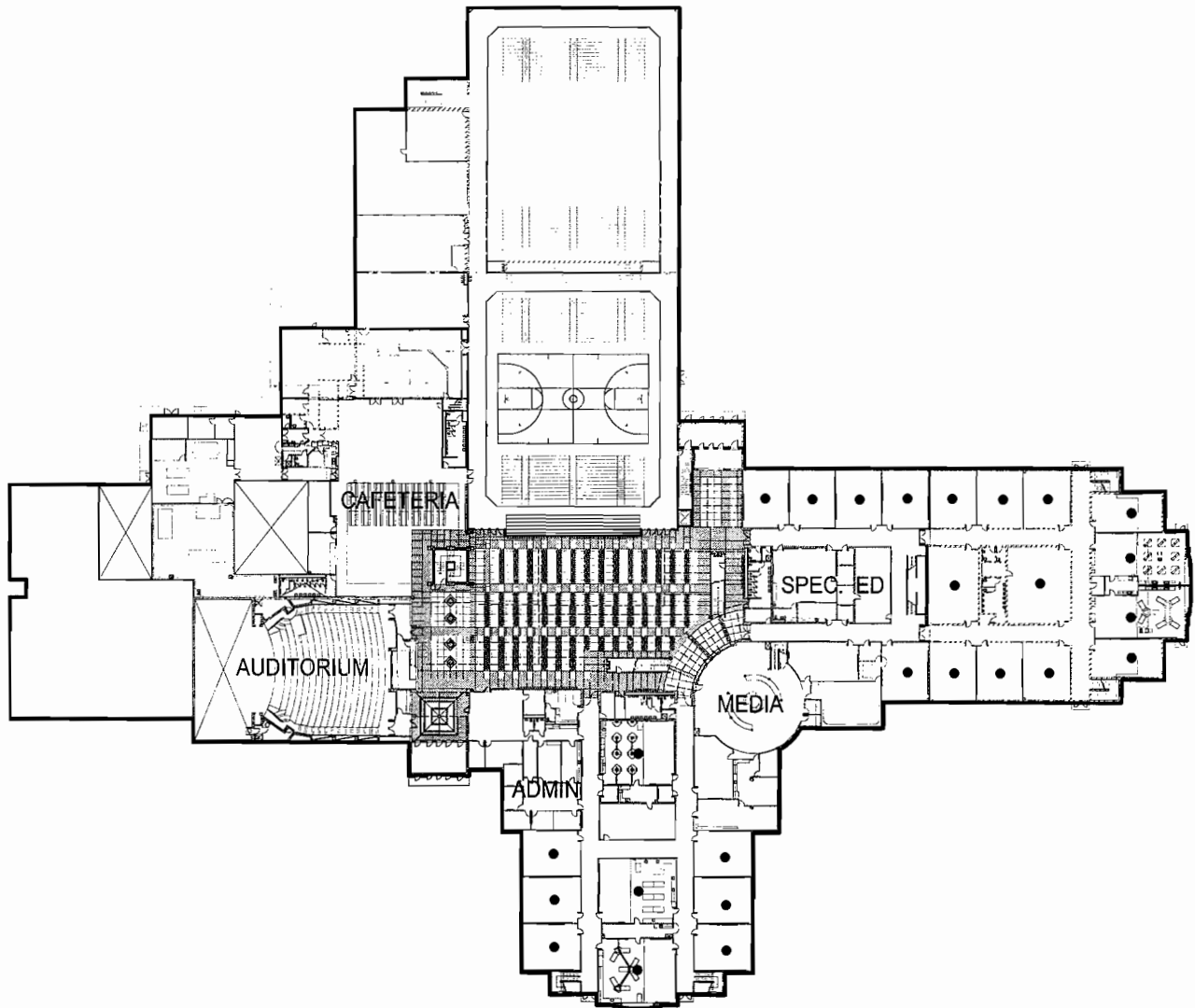
Capacity = 1500 Students



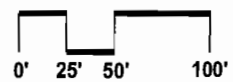
LOWER LEVEL



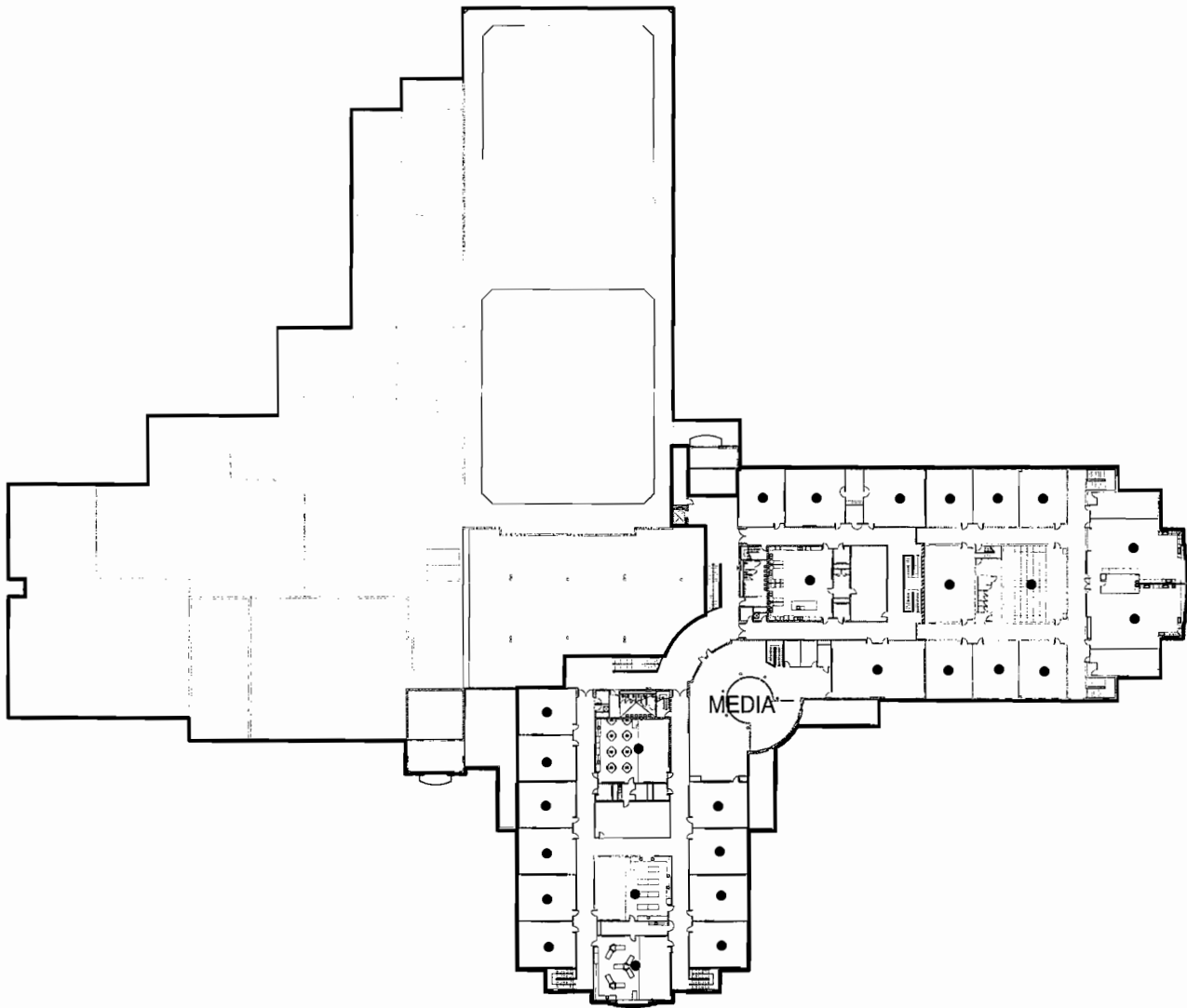
**NEW PRAGUE HIGH SCHOOL
(GRADES 9-12)**



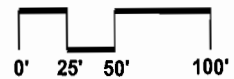
MAIN LEVEL



**NEW PRAGUE HIGH SCHOOL
(GRADES 9-12)**



UPPER LEVEL



APPENDIX E: Enrollment Projections from School Finances.Com Study

NEW PRAGUE AREA SCHOOLS

DEMOGRAPHIC STUDY AND ENROLLMENT PROJECTIONS

October 2008



Ann Thomas, M.A.
James D. Sheehan, Ed.D.
16632 Iredale Path
Lakeville, MN 55044
www.schoolfinances.com

Table of Contents

I. PURPOSE OF THE STUDY.....	3
II. MAP OF THE DISTRICT	3
III. OVERVIEW OF THE DISTRICT	4
IV. POPULATION TRENDS, ESTIMATES, AND PROJECTIONS.....	4
A. ACTUAL AND PROJECTED POPULATION GROWTH OF THE DISTRICT	5
B. ACTUAL AND PROJECTED YOUTH POPULATION	5
C. HOUSEHOLDS WITH AND WITHOUT CHILDREN	6
D. BUILDING PERMITS IN THE CITY OF NEW PRAGUE	6
V. ENROLLMENT HISTORY AND TRENDS.....	7
A. ENROLLMENT HISTORY	7
B. MIGRATION OF STUDENTS IN NEW PRAGUE #721	8
C. ENROLLMENT OPTIONS – NEIGHBORING DISTRICTS	8
VI. ENROLLMENT PROJECTIONS.....	10
A. KINDERGARTEN PROJECTION	11
B. ENROLLMENT PROJECTIONS	12
VII. OBSERVATIONS AND RECOMMENDATIONS	15
OBSERVATIONS	15
RECOMMENDATIONS.....	15
VIII. APPENDICES.....	16
<i>APPENDIX A – ENROLLMENT OPTIONS TO NEIGHBORING DISTRICTS</i>	<i>16</i>
<i>APPENDIX B – RESIDENT STUDENTS OF NEW PRAGUE.....</i>	<i>23</i>
<i>APPENDIX C – STUDENTS SERVED IN NEW PRAGUE AREA SCHOOLS.....</i>	<i>24</i>

I. **PURPOSE OF THE STUDY**

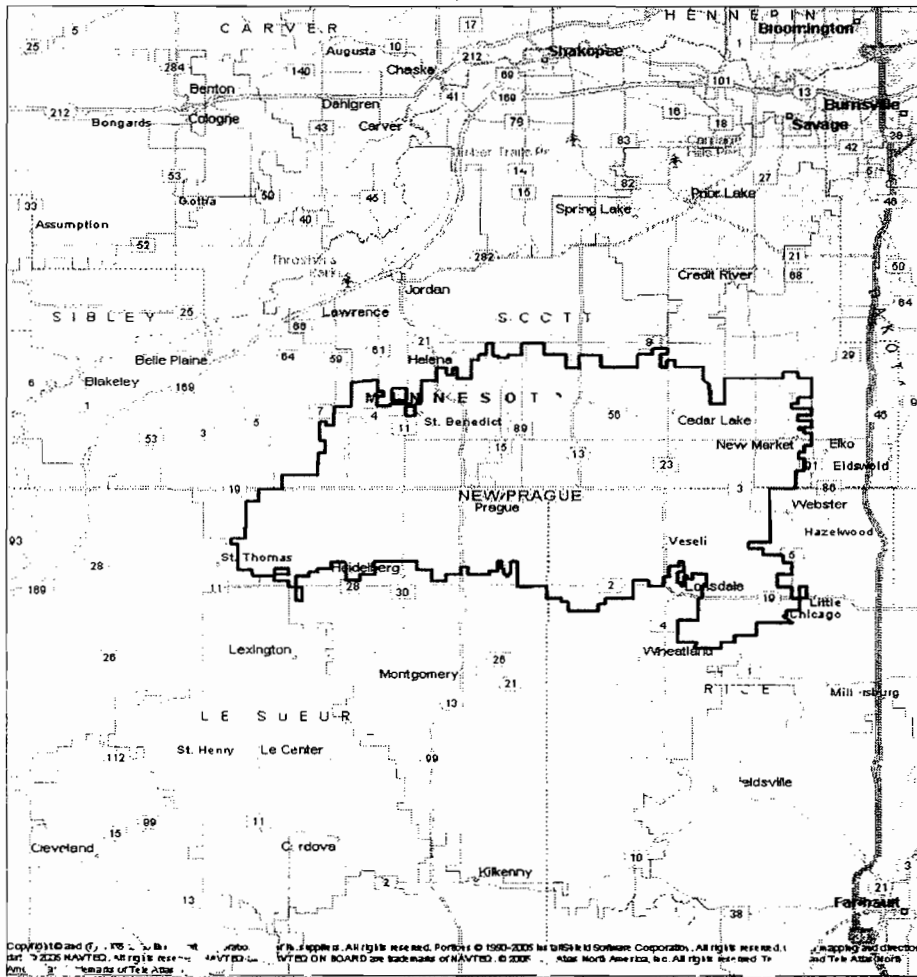
Estimating the number of students that will enroll in a school district in future years is important because:

- District revenues are based on the number of students that enroll
- The number of teachers needed is based on enrollment
- School facilities needs and changes in facilities are based on enrollment

Given the importance of enrollment projections, the New Prague Area Schools retained SchoolFinances.com to complete a demographic analysis of the district and prepare 10 year enrollment projections for the district.

This report provides the background information reviewed including general characteristics of the district, enrollment history and trends, birth patterns and kindergarten enrollment.

II. **MAP OF THE DISTRICT**



III. OVERVIEW OF THE DISTRICT

The New Prague Area Schools #721 has a “healthy” Enrollment. The district has realized a Kindergarten enrollment that is greater than the leaving grade 12 enrollment for the past years prior to 2008-09 and this year the K enrollment was only 6 students less than the leaving grade 12 students. The migration of students into the community has been positive for the past 6 years; this is reflected in the district enrollment through increasing Kindergarten enrollment and increased migration at other grades within the the district. The district enrolls options from other school districts that are approximately 160 greater than the options leaving the district. Again, this is a healthy indicator for the district. Of the school districts neighboring New Prague only Lakeville enrolls more New Prague students than come to New Prague from Lakeville and this difference is only 8 students.

In the five years prior to 2008-09, District #721 realized an enrollment increase greater than 3% each year. In 2008-09 the increase was 8 students or .23%. The economic downturn, energy cost increase and mortgage crisis have all influenced the New Prague community and school district.

IV. POPULATION TRENDS, ESTIMATES, AND PROJECTIONS

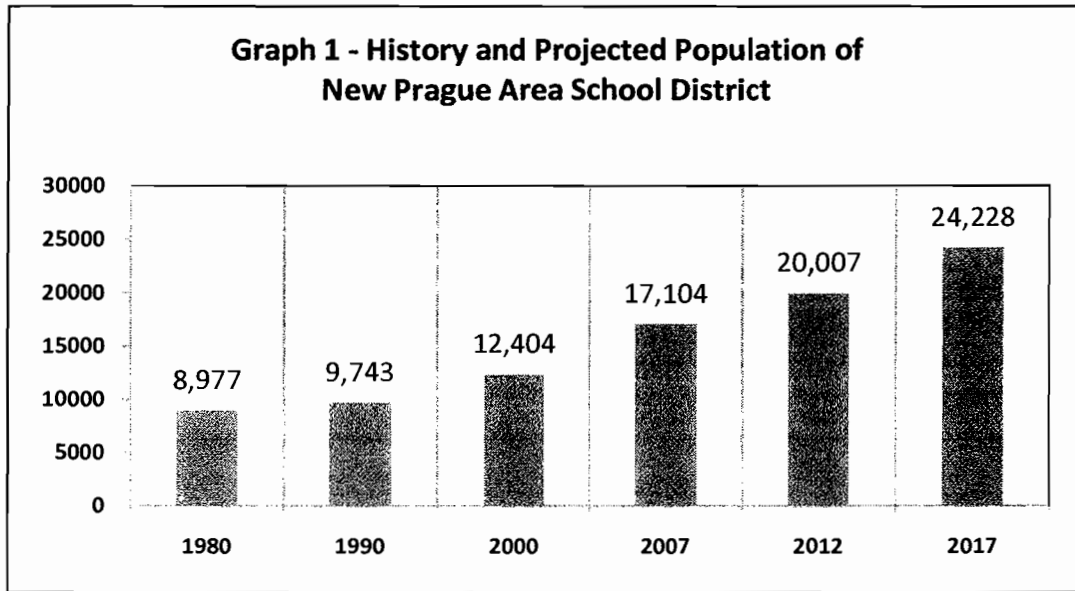
A profile of the geographic region of the district was prepared that used a database that includes the census of 1990, 2000, estimates for 2007 and projections for 2012. The data also includes Medicare and Social Security files, Internal Revenue Service statistics on tax filers and a household level credit and demographic database, which cover the vast majority of households. The detail of this information is presented in a supplement to this report, “Census Geographic Report.”

Some basic demographic trends to report:

- Over the next five years, the district population is projected to grow by 17.0%.
- The current year median age for the district is 35.9, and the average age is 35.8. Five years from now, the median age is projected to be 37.7.
- Of the district’s current population,
 - 96.9% are White
 - 1.5% are Asian
 - 0.5% are Black or African American
 - 0.4% are American Indian or Alaska Native
- The number of households in the district is estimated to have changed from 4,201 to 5,941, resulting in an increase of 41.4% between 2000 and the current year. Over the next five years, the number is expected to increase by 18.5% to 7037.
- Currently, it is estimated that 8.0% of the population over 25 in the district had earned a Masters, Professional, or Doctorate Degree and 17.9% had earned a Bachelor's Degree.

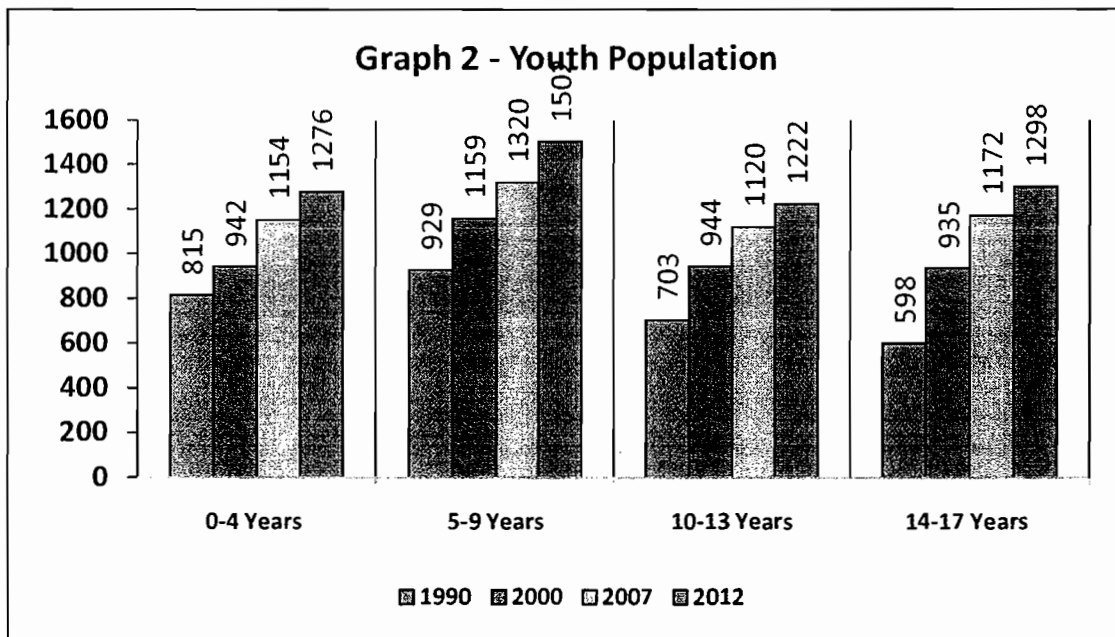
A. Actual and Projected Population Growth of the District

Graph 1 presents the population of the New Prague Area Schools from 1980 through 2017 projections. From the 2007 estimates of 17,104 the population is projected to increase to 24,228 in 2017.



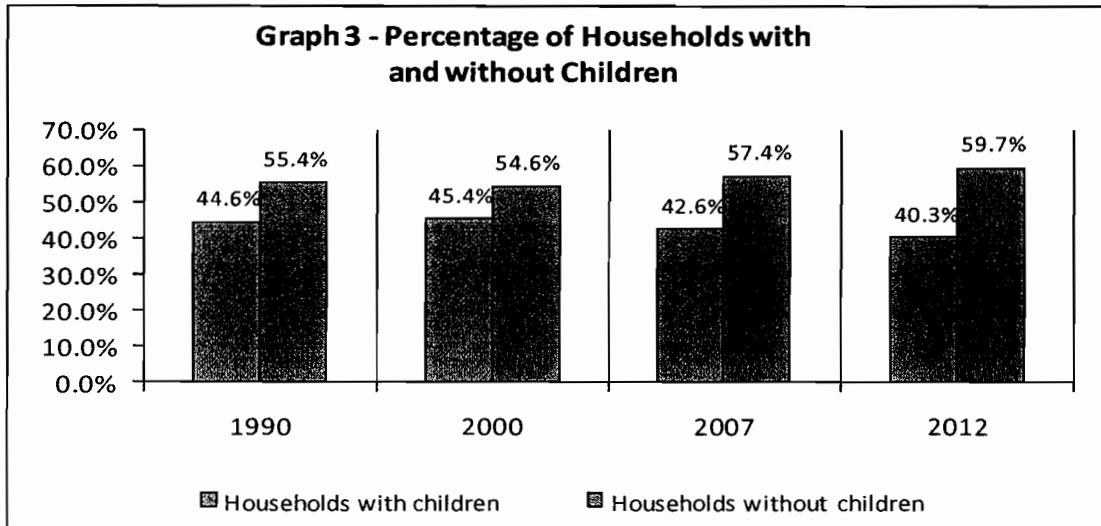
B. Actual and Projected Youth Population

Graph 2 presents the actual and projected youth population for the New Prague Area District from 1990 through the projections in 2012. From the 2007 estimates to the 2012 projections all age groups are projected to increase.



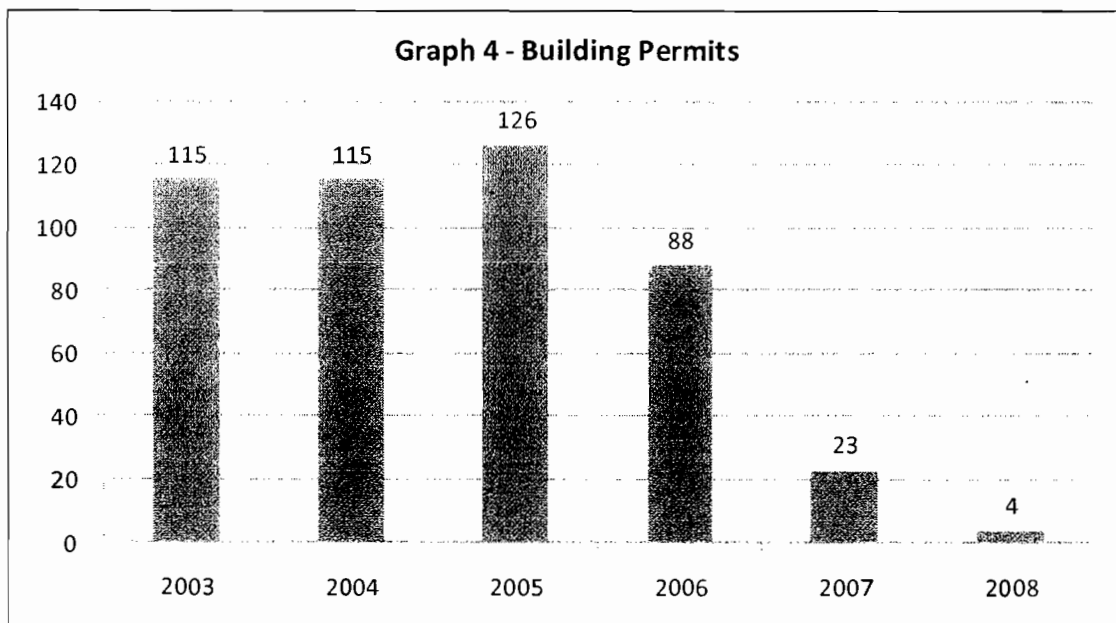
C. Households with and without Children

Graph 3 presents the percentage of households in the New Prague area district with and without children. Since 1990, the majority of households in the district have been without children.



D. Building Permits in the City of New Prague

Graph 4 presents the building permits issued for single family homes in the city of New Prague from 2002 through September 23, 2008. Since 2005 the number of building permits for residential homes has decreased.



V. ENROLLMENT HISTORY AND TRENDS

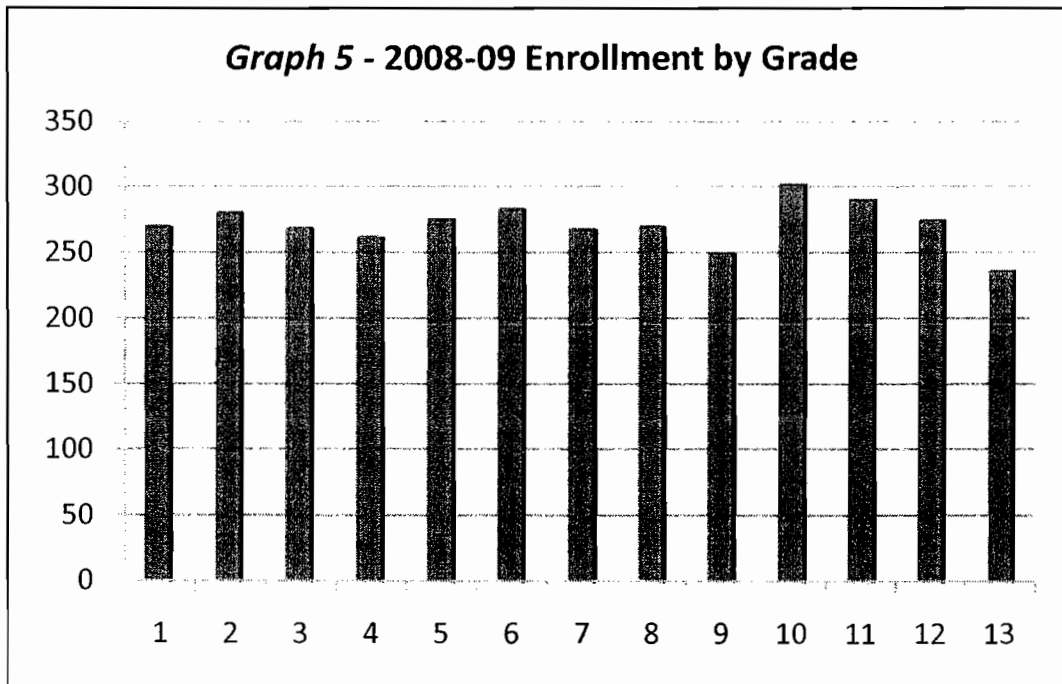
A. Enrollment History

The enrollment history of a school district provides the basis for projecting enrollment. By analyzing the fall enrollment realized in the New Prague district for the years 2001-02 through 2008-09, we form the basis for projecting the enrollments that will be realized in the next 7 years. **Table 1** presents the enrollment history by grade. The enrollment of the district has increased during this time, at an average of 138 students annually.

Graph 5 presents the current year's enrollment by grade.

Table 1 - Enrollment History

	2002-03	2003-04	2004-05	2005-06	2006-07	2007-08	2008-09
K	193	216	244	226	263	281	270
1	179	207	240	250	247	269	281
2	188	202	231	254	273	257	269
3	189	199	222	228	268	275	262
4	215	205	222	241	250	280	276
5	191	227	219	221	256	263	284
6	193	212	247	237	245	273	268
7	243	199	232	255	240	254	270
8	189	252	216	239	275	249	249
9	239	241	307	275	296	312	302
10	242	239	253	309	267	279	291
11	234	241	238	235	292	258	275
12	208	226	230	236	229	276	237
Total K-12	2703	2866	3101	3206	3401	3526	3534
Enrollment Change		163	235	105	195	125	8



B. Migration of Students in New Prague #721

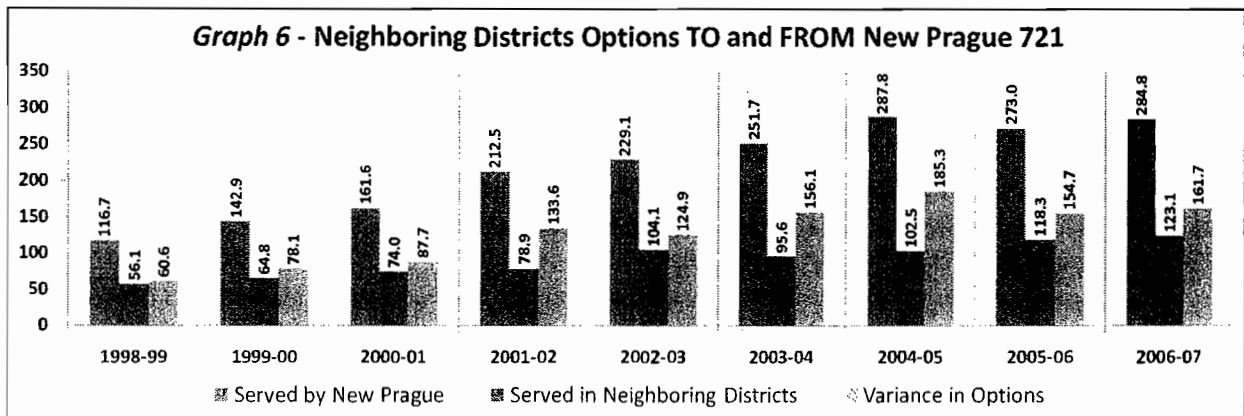
The mobility of a school district is directly related to the 'migration' of students as used in enrollment projection methodology. **Table 2** shows the total enrollment migration in the district has been positive during the past 5 years. The variation in the leaving grade 12 and entering Kindergarten students, has been positive in 4 of the last 6 years.

Table 2 - Total Migration by Grade						
	2003-04	2004-05	2005-06	2006-07	2007-08	2008-09
12 - K	8.00	18.00	(4.00)	27.00	52.00	(6.00)
1	14.00	24.00	6.00	21.00	6.00	0.00
2	23.00	24.00	14.00	23.00	10.00	0.00
3	11.00	20.00	(3.00)	14.00	2.00	5.00
4	16.00	23.00	19.00	22.00	12.00	1.00
5	12.00	14.00	(1.00)	15.00	13.00	4.00
6	21.00	20.00	18.00	24.00	17.00	5.00
7	6.00	20.00	8.00	3.00	9.00	(3.00)
8	9.00	17.00	7.00	20.00	9.00	(5.00)
9	52.00	55.00	59.00	57.00	37.00	53.00
10	0.00	12.00	2.00	(8.00)	(17.00)	(21.00)
11	(1.00)	(1.00)	(18.00)	(17.00)	(9.00)	(4.00)
12	(8.00)	(11.00)	(2.00)	(6.00)	(16.00)	(21.00)
Total Migration	155.00	217.00	109.00	168.00	73.00	14.00
Enrollment Change	163.00	235.00	105.00	195.00	125.00	8.00

C. Enrollment options – neighboring districts

Enrollment options influence the enrollment and finances of MN school districts. If a district loses students they lose revenues. If students option into a school district the school district receives additional revenues. Since most school districts have an enrollment capacity greater than their current enrollment they are receptive to students opting to enroll in the district.

Appendix A to this report presents a numeric history of the options to and from the New Prague Area Schools and bordering school districts. There are (7) school districts that border New Prague. These districts are: Belle Plaine, Jordan, Lakeville, Northfield, Montgomery Lonsdale, LeSueur Henderson and LeCenter. In 2006-07, (the last year reported), 123 New Prague students enrolled in neighboring districts. And, 284 students from neighboring districts enrolled in New Prague. Therefore, district #721 had a net gain of 161.7 students via options to/from neighboring districts in 2006-07. The data tables presented in the appendix present these data by district with graphs to strengthen the understanding of the trends in options to neighboring districts. A complete roster of the districts that Resident Students attended and from which district New Prague enrolled students is included in the attachment. **Graph 6** presents the total enrollment options to and from neighboring districts for the New Prague Area Schools.



Appendix B presents more detail for enrollment options and answers the question, “Where did the Resident students of New Prague attend school in 2006-07?” Some general information about these students:

- The largest number of students leaving the district via options to other public schools went to Montgomery Lonsdale.
- Twelve (12.1) resident students attended seven charter schools in 2006-07. The largest number; 4.69 resident students, attended Minnesota Transitions Charter School.

Appendix C presents more detail of Enrollment Options and answers the question, “Which MN School Districts enrolled students in the NEW PRAGUE AREA SCHOOLS in 2006-07?” Some general information about these students:

- The largest number of students entering the district via options came from the Montgomery Lonsdale school district, followed by Jordan, Lakeville, and Prior Lake.

VI. ENROLLMENT PROJECTIONS

Not even the best projections can foresee the future precisely. They simply carry demographic trends and factors forward in time. All methods are based on data that influence enrollments which are known or reliably predicted at the time they are made. Trends in enrollments are likely to change over time as the latest available data identify shifts in demographic trends. To provide the earliest possible notice of such changes, the projections are revised every year.

Several methods of projecting enrollment are commonly used; the cohort survival method, the numeric survival method and the housing unit method. The cohort survival method and the numeric survival are similar in that both rely on the history of enrollment that has been achieved to project the future enrollment.

Cohort and Numeric Survival Methods of Projecting Enrollment

The methods of projecting enrollment used by SchoolFinances.com are weighted cohort survival, average cohort survival, numeric survival, or a merged method which uses components of each. These methods are based on the concept that students progress routinely from one grade to another and that factors that influenced grade progression in the past will continue to influence the progression of students from grade to grade in the future.

In the weighted cohort survival methodology a ratio is computed for each grade, which compares the number of students in a grade to the number of students in the previous grade during the previous year. The cohort survival ratio indicates whether the change between grades results in enrollment that is stable, increasing or decreasing. A cohort survival ratio of less than 1 indicates declining enrollment while a cohort survival ratio greater than 1 indicates increasing enrollment. If for example, a school had 100 fourth graders and the next year has 105 fifth graders, the cohort survival ratio would be 1.05. The weighting places a heavier value on the more recent years' enrollment change. This method assumes that the rate of progression from one grade to the next in the future is best predicted by the progression in previous years.

The numeric survival method is similar in that grade to grade progressions are compared, but rather than calculate a ratio, the changed enrollment – either positive or minus, is added or subtracted to the enrollment in a particular grade to project future enrollment. Using the same data that was presented above, if a school had 100 fourth graders and the next year has 105 fifth graders, the numeric survival would be +5. We can also then average and weight these survival factors.

These methods encompass the variables that account for an increase or decrease in the size of a grade group or cohort as it moves to the next grade and represents the cumulative effect of following factors:

1. Migration, in or out, of the grades in the district
2. Changes in school program
3. Drop-outs, transfers, etc.
4. Births and deaths
5. Housing growth

We used the average ratio of enrollment change and two years of enrollment history to develop enrollment projections for New Prague. Using two years of enrollment history give some, but not total weight to this most recent year in which the enrollments realized may have been lower than projections. It is recommended that these enrollment projections be reviewed annually so that adjustments can be made with respect to development changes within the district. At any given time, the following factors may have an effect on the projections:

1. economic conditions
2. changes in the rate of new housing development
3. changes in interest rates which could increase or decrease home sales

A. Kindergarten projection

SchoolFinances.Com uses several methods to project kindergarten enrollment in future years. The Kindergarten enrollment may be held constant, a linear projection of K enrollment from past years may be developed or the births in the County and Zip Codes of the school district and can be corrected with Kindergarten enrollments realized (5) years later to project current Kindergarten enrollment. All of these methods were reviewed to determine the best method for projecting Kindergarten enrollment for New Prague.

The method chosen was using the births in the zip code served by New Prague and the lowest percentage of the past 4 years of births to Kindergarten enrollment 5 years later. This is a conservative projection.

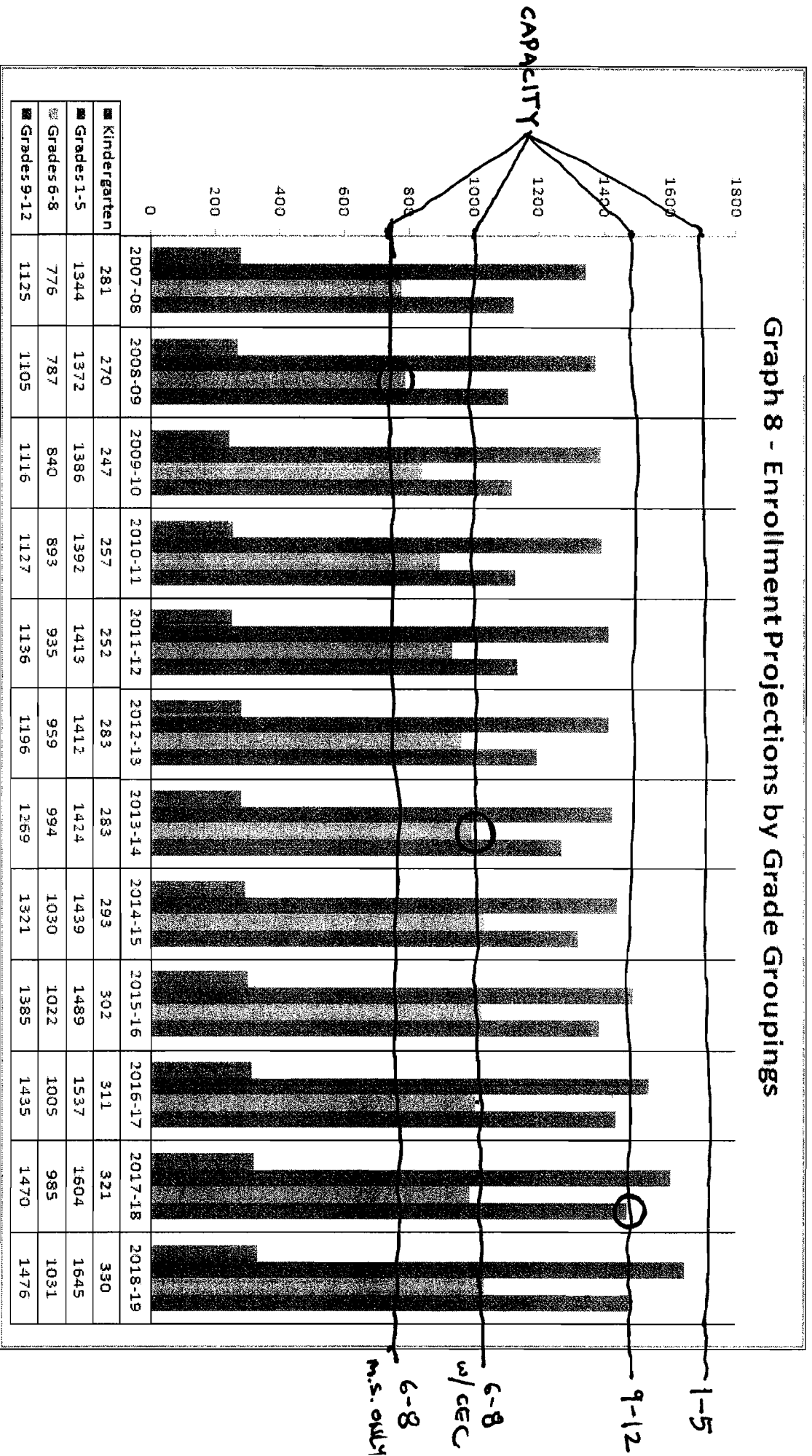
B. Enrollment Projections

The enrollment projections for District #721 are presented in **Table 3, Graphs 7 and 8**. These enrollment projections are 'soft'. By this, we mean that certain factors not within the control of the school district can dramatically influence these projections.

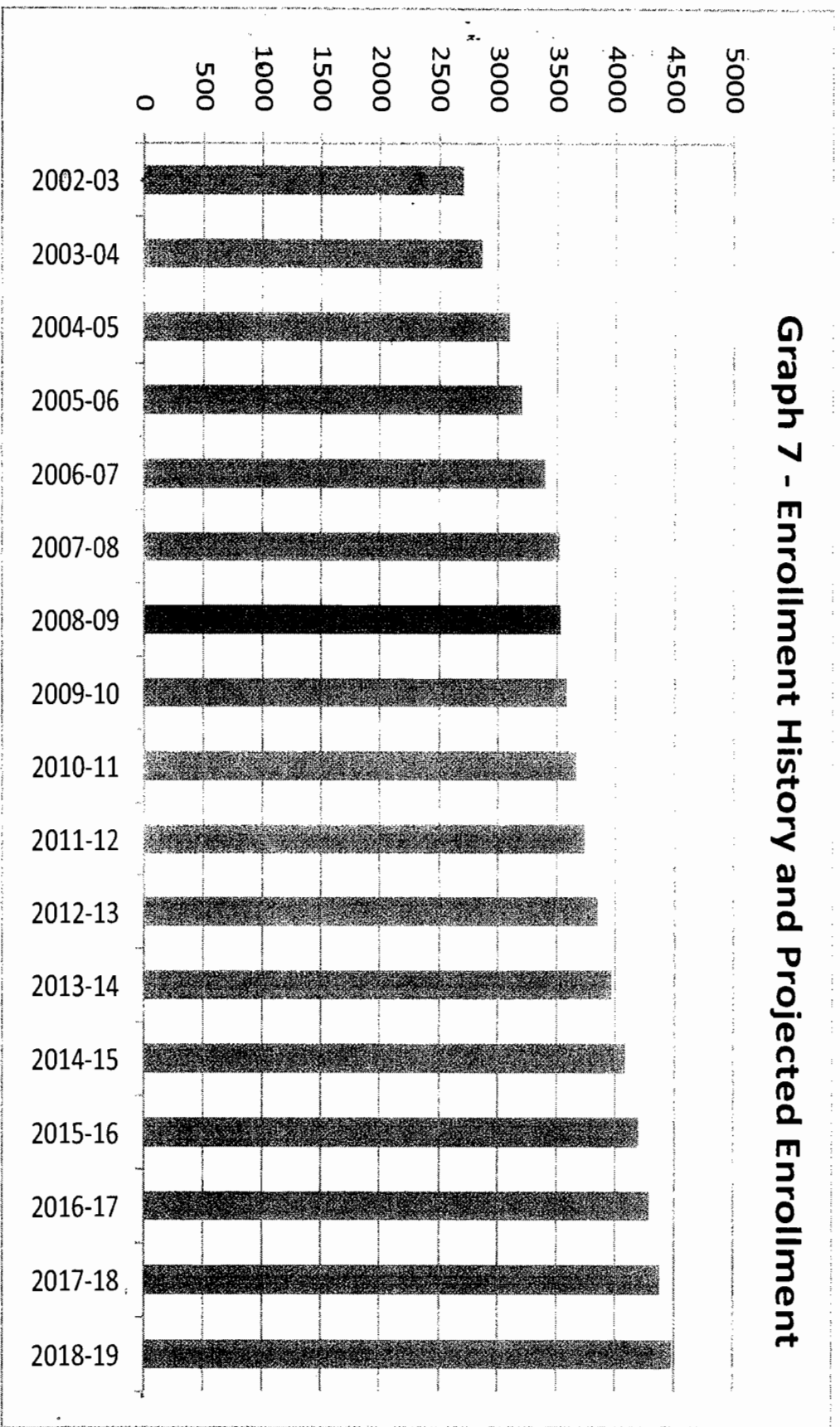
Table 3 - Enrollment Projections

	2009-10	2010-11	2011-12	2012-13	2013-14	2014-15	2015-16	2016-17	2017-18	2018-19
K	247	257	252	283	283	293	302	311	321	330
1	273	252	263	258	289	289	299	309	319	328
2	287	284	263	274	268	301	301	312	321	331
3	273	289	286	264	276	270	303	303	314	324
4	268	285	302	299	276	288	282	317	317	328
5	285	282	300	317	315	291	303	297	333	333
6	296	304	301	320	338	335	310	323	316	356
7	271	307	315	312	331	351	348	321	335	328
8	272	282	319	327	324	344	364	361	333	347
9	292	309	320	361	371	367	390	413	409	378
10	283	275	291	301	341	350	346	368	389	386
11	284	274	266	281	291	329	338	335	355	376
12	256	268	259	252	266	275	311	319	316	336
Total K-12	3588	3669	3735	* 3849	* 3969	* 4083	4198	* 4289	4380	4482
Change		80	67	114	120	114	115	91	91	102

Graph 8 presents the enrollment projections in the grade groupings of the district.



Graph 7 presents the enrollment history for 2002-03 through 2008-09 with projected enrollment from 2009-10 through 2018-2019.



VII. Observations and Recommendations

Observations

1. In the five years prior to 2008-09, District #721 realized an enrollment increase greater than 3% each year. In 2008-09 the increase was 8 students or .23%.
2. From the 2007 estimates of 17,104 the population of the district is projected to increase to 24,228 in 2017.
3. The number of households in the district is estimated to have changed from 4,201 to 5,941, resulting in an increase of 41.4% between 2000 and the current year. Over the next five years, the number is expected to increase by 18.5% to 7037.
4. From the 2007 estimates to the 2012 projections the number of children ages 0-17 is projected to increase.
5. Since 1990, the majority of households in the district has been without children.
6. Since 2005 the number of building permits for residential homes has decreased.
7. The variation in the leaving grade 12 and entering Kindergarten students has been positive in 4 of the last 6 years.
8. The district enrolls options from other school districts that are approximately 160 greater than the options leaving the district.

Recommendations

1. Enrollment of the district should be reviewed annually to determine if the projections contained in this report are realized.

VIII. Appendices

Appendix A – Enrollment Options to Neighboring Districts

721		NEW PRAGUE AREA SCHOOLS													Total	
194		LAKEVILLE														
Resident Students of:																
Attending or Served by:																
Serving Dist.	(1)	(2)	(3)	(4)	(5)	(6)	(7)	(8)	(9)	(10)	(11)	(12)	EC	HK	K	Total
194	0.0	0.0	0.0	0.0	0.0	0.0	0.0	1.0	2.1	1.1	4.5	4.3	0.0	0.0	0.3	15.7
1998-99	1.0	1.0	0.7	0.0	0.7	1.0	2.0	1.0	1.0	2.3	0.0	3.1	0.0	0.0	2.0	15.8
1999-00	0.0	0.0	1.0	1.0	1.0	1.0	1.2	3.1	1.2	2.8	2.1	2.0	0.0	0.0	0.0	16.3
2000-01	0.0	0.0	0.0	1.0	1.0	1.0	3.0	2.3	3.3	1.0	3.1	2.3	0.0	0.0	0.0	18.0
2001-02	0.0	0.0	0.8	0.4	2.0	1.0	1.0	3.0	1.1	3.7	1.0	4.5	0.0	0.2	1.6	20.2
2002-03	1.0	0.0	0.0	0.0	0.0	1.1	1.0	1.0	3.0	0.4	4.0	1.1	0.0	0.0	0.0	13.4
2003-04	0.0	1.0	0.6	0.0	0.0	1.1	1.0	1.1	1.8	2.0	1.0	4.6	0.0	0.0	0.5	13.8
2004-05	0.0	1.0	1.0	0.0	0.0	0.0	0.0	1.0	1.3	1.0	3.0	2.6	0.0	0.0	0.6	11.5
2005-06	0.0	1.0	1.0	0.0	0.0	0.0	0.0	1.0	1.0	2.2	2.0	4.0	0.3	0.0	3.0	19.2
2006-07	2.0	1.2	2.1	1.0	0.0	0.4	0.2	0.0	1.0	2.2	2.0	4.0	0.3	0.0	3.0	19.2

721		NEW PRAGUE AREA SCHOOLS													Total	
717		JORDAN														
Resident Students of:																
Attending or Served by:																
Serving Dist.	(1)	(2)	(3)	(4)	(5)	(6)	(7)	(8)	(9)	(10)	(11)	(12)	EC	HK	K	Total
717	0.0	0.0	0.0	0.0	0.0	1.0	0.0	3.0	0.9	3.3	0.0	0.5	0.0	0.0	1.0	9.6
1998-99	0.0	0.0	0.0	0.0	0.0	0.0	0.6	0.6	2.0	1.0	4.6	0.0	0.0	0.0	1.0	10.7
1999-00	1.0	0.0	0.0	0.0	0.0	0.0	2.0	1.0	1.0	2.0	1.6	2.7	0.6	0.0	0.0	11.9
2000-01	0.7	1.0	0.1	0.0	1.0	0.0	1.1	2.0	2.6	2.5	3.0	2.0	0.4	0.0	1.0	17.4
2001-02	1.0	1.0	1.0	0.0	0.0	1.0	1.0	1.0	2.7	3.0	3.0	3.0	0.3	0.0	0.0	17.0
2002-03	0.0	1.0	0.2	1.0	1.0	0.0	2.4	0.0	1.0	3.2	4.0	2.4	0.0	0.0	2.0	18.2
2003-04	2.5	2.3	1.0	0.3	2.0	2.4	2.0	3.7	0.9	0.0	2.0	4.0	0.0	0.0	1.0	24.1
2004-05	1.0	3.3	2.9	0.0	2.0	1.0	4.0	2.0	4.6	0.3	0.3	3.6	0.3	0.0	1.6	26.9
2005-06	1.0	1.0	3.8	2.0	1.0	1.0	1.3	4.0	2.6	5.6	0.7	0.0	0.5	0.1	0.4	24.9
2006-07	1.0	1.0	3.8	2.0	1.0	1.0	1.3	4.0	2.6	5.6	0.7	0.0	0.5	0.1	0.4	24.9

721		NEW PRAGUE AREA SCHOOLS													Total	
716		BELLE PLAINE														
Resident Students of:																
Attending or Served by:																
Serving Dist.	(1)	(2)	(3)	(4)	(5)	(6)	(7)	(8)	(9)	(10)	(11)	(12)	EC	HK	K	Total
716	0.0	0.0	0.0	0.0	0.0	0.0	0.0	0.0	0.0	0.0	0.0	0.0	0.0	0.0	0.0	0.0
1998-99	0.0	0.0	0.0	0.0	0.0	0.0	0.0	0.0	0.0	0.0	0.5	0.0	0.0	0.0	1.0	1.5
1999-00	1.0	0.0	1.0	1.0	0.6	0.0	0.0	0.0	1.5	0.0	0.0	1.5	0.0	0.0	0.0	6.5
2000-01	0.0	1.0	0.0	0.0	0.0	0.0	0.0	0.0	0.0	1.0	0.0	0.0	0.0	0.0	0.0	2.0
2001-02	0.0	0.0	1.0	0.0	0.5	0.0	0.5	0.0	0.0	0.0	1.0	0.0	0.0	0.0	0.0	3.0
2002-03	0.0	0.0	0.0	1.0	0.0	1.0	0.0	1.0	0.0	0.0	0.0	1.0	0.0	0.0	0.0	4.0
2003-04	0.0	0.0	0.0	0.0	0.0	1.0	1.0	1.0	1.0	0.0	0.0	0.0	0.0	0.0	0.0	3.0
2004-05	0.0	0.0	0.0	0.0	1.0	1.0	1.0	1.0	1.0	0.0	0.0	0.0	0.0	0.0	0.0	4.0
2005-06	0.0	0.0	0.0	0.0	0.0	0.0	0.0	0.0	0.0	0.0	0.0	0.0	0.0	0.0	0.0	0.0
2006-07	0.0	0.0	0.2	0.0	0.0	0.0	1.0	0.0	0.0	0.0	0.0	0.0	0.0	0.4	1.0	2.6

**NEW PRAGUE AREA SCHOOLS
NORTHFIELD**

Resident Students of:
Attending or Served by:

Serving Dist.	(1)	(2)	(3)	(4)	(5)	(6)	(7)	(8)	(9)	(10)	(11)	(12)	EC	HK	K	Total
659	2.0	0.0	0.1	1.0	2.0	0.0	1.0	1.0	0.0	0.0	0.0	0.0	0.3	0.0	0.0	7.4
659	0.0	2.0	0.0	0.2	1.0	2.0	0.0	1.0	1.0	0.3	1.8	0.3	0.0	0.0	2.0	11.6
659	2.0	0.0	2.0	0.0	0.0	1.0	2.0	0.0	2.1	2.1	1.2	0.6	0.0	0.0	2.0	15.0
659	2.0	2.0	0.0	2.0	0.0	0.0	1.0	2.0	0.0	3.3	2.1	1.2	0.0	0.0	1.0	16.5
659	0.7	2.0	2.4	0.0	2.0	0.0	1.5	3.0	3.0	3.0	3.7	2.0	0.0	0.0	2.0	25.3
659	2.4	0.0	2.0	2.0	0.0	1.9	0.0	1.0	2.0	3.0	1.3	3.9	0.0	0.0	1.0	20.5
659	1.0	1.0	0.0	3.0	3.0	0.2	2.0	1.0	1.0	2.2	4.2	1.3	0.0	0.0	1.0	20.9
659	1.0	1.0	0.7	0.7	3.7	2.0	1.0	3.8	2.0	1.0	3.0	5.5	0.0	1.4	2.0	28.8
659	4.0	1.0	1.0	0.4	0.0	3.0	2.4	1.3	3.0	2.5	1.2	2.7	0.0	0.0	3.0	25.4

721
659

1998-99
1999-00
2000-01
2001-02
2002-03
2003-04
2004-05
2005-06
2006-07

**NEW PRAGUE AREA SCHOOLS
MONTGOMERY-LONSDALE**

Resident Students of:
Attending or Served by:

Serving Dist.	(1)	(2)	(3)	(4)	(5)	(6)	(7)	(8)	(9)	(10)	(11)	(12)	EC	HK	K	Total
394	2.0	1.8	2.0	2.0	2.0	4.0	1.5	1.7	0.7	2.0	0.4	0.7	0.0	0.3	1.1	22.3
394	1.0	1.0	1.0	3.0	3.0	2.0	4.0	1.3	2.0	1.0	2.0	1.0	0.0	0.0	0.0	22.3
394	0.0	1.0	1.0	1.0	3.8	3.0	2.8	3.0	2.0	2.0	1.0	2.0	0.0	0.0	0.0	22.6
394	0.0	0.1	1.0	1.0	1.0	3.7	2.3	2.6	2.0	1.8	3.1	1.0	0.0	0.0	2.5	22.0
394	3.6	1.0	1.8	1.7	1.2	1.0	3.6	1.3	4.0	2.8	4.0	4.6	0.0	1.2	5.0	36.8
394	5.8	5.1	0.2	3.0	2.3	2.0	2.2	4.5	2.0	4.0	1.0	4.7	0.5	0.0	1.5	38.7
394	2.5	5.9	4.9	0.0	2.7	2.0	2.2	3.2	4.0	3.0	3.0	1.0	0.1	1.0	5.2	40.7
394	7.6	3.0	4.9	5.1	0.0	4.3	1.3	3.0	3.0	3.4	3.0	1.5	0.3	0.1	7.6	48.1
394	11.8	5.7	2.0	3.6	4.8	1.0	6.0	0.0	3.3	3.0	3.9	1.5	0.0	0.7	3.8	51.0

721
394

1998-99
1999-00
2000-01
2001-02
2002-03
2003-04
2004-05
2005-06
2006-07

**NEW PRAGUE AREA SCHOOLS
LESUEUR-HENDERSON**

Resident Students of:
Attending or Served by:

Serving Dist.	(1)	(2)	(3)	(4)	(5)	(6)	(7)	(8)	(9)	(10)	(11)	(12)	EC	HK	K	Total
2397	0.0	0.0	0.0	0.0	0.0	0.0	1.0	0.0	0.0	0.0	0.0	0.0	0.0	0.0	0.0	1.0
2397	0.0	0.0	0.0	0.0	0.0	0.0	0.0	1.0	0.0	1.0	1.0	0.0	0.0	0.0	0.0	3.0
2397	0.0	0.0	0.0	0.0	0.0	0.0	0.0	0.0	1.0	0.0	0.0	0.7	0.0	0.0	0.0	1.7
2397	1.0	0.0	0.0	1.0	0.0	0.0	0.0	0.0	0.0	1.0	0.0	0.0	0.0	0.0	0.0	3.0
2397	0.0	0.0	0.0	0.0	1.0	0.0	0.0	0.0	0.0	0.0	1.0	0.0	0.0	0.0	0.0	2.0
2397	0.0	0.0	0.0	0.0	0.0	0.1	0.0	0.0	0.0	0.0	0.0	0.3	0.0	0.0	0.0	0.4
2397	0.0	0.0	0.0	0.0	0.0	0.0	0.0	0.0	0.0	0.0	0.0	0.0	0.0	0.0	0.0	0.0
2397	0.0	0.0	0.0	0.0	0.0	0.0	0.0	0.0	0.0	0.0	0.0	2.0	0.0	0.0	0.0	2.0
2397	0.0	0.0	0.0	0.0	0.0	0.0	0.0	0.0	0.0	0.0	0.0	0.0	0.0	0.0	0.0	0.0

721
2397

1998-99
1999-00
2000-01
2001-02
2002-03
2003-04
2004-05
2005-06
2006-07

**NEW PRAGUE AREA SCHOOLS
LECENTER**

Resident Students of:
Attending or Served by:

Serving Dist.	(1)	(2)	(3)	(4)	(5)	(6)	(7)	(8)	(9)	(10)	(11)	(12)	EC	HK	K	Total
1998-99	0.0	0.0	0.0	0.0	0.0	0.0	0.0	0.0	0.0	0.0	0.0	0.0	0.0	0.0	0.0	0.0
392	0.0	0.0	0.0	0.0	0.0	0.0	0.0	0.0	0.0	0.0	0.0	0.0	0.0	0.0	0.0	0.0
1999-00	0.0	0.0	0.0	0.0	0.0	0.0	0.0	0.0	0.0	0.0	0.0	0.0	0.0	0.0	0.0	0.0
392	0.0	0.0	0.0	0.0	0.0	0.0	0.0	0.0	0.0	0.0	0.0	0.0	0.0	0.0	0.0	0.0
2000-01	0.0	0.0	0.0	0.0	0.0	0.0	0.0	0.0	0.0	0.0	0.0	0.0	0.0	0.0	0.0	0.0
392	0.0	0.0	0.0	0.0	0.0	0.0	0.0	0.0	0.0	0.0	0.0	0.0	0.0	0.0	0.0	0.0
2001-02	0.0	0.0	0.0	0.0	0.0	0.0	0.0	0.0	0.0	0.0	0.0	0.0	0.0	0.0	0.0	0.0
392	0.0	0.0	0.0	0.0	0.0	0.0	0.0	0.0	0.0	0.0	0.0	0.0	0.0	0.0	0.0	0.0
2002-03	0.0	0.0	0.0	0.0	0.0	0.0	0.0	0.0	0.0	0.0	0.0	0.0	0.0	0.0	0.0	0.0
392	0.0	0.5	0.0	0.0	0.0	0.0	0.0	0.0	0.0	0.0	0.0	0.0	0.0	0.0	0.0	0.5
2003-04	0.0	0.0	0.0	0.0	0.0	0.0	0.0	0.0	0.0	0.0	0.0	0.0	0.0	0.0	0.0	0.0
392	0.0	0.0	0.0	0.0	0.0	0.0	0.0	0.0	0.0	0.0	0.0	0.0	0.0	0.0	0.0	0.0
2004-05	0.0	0.0	0.0	0.0	0.0	0.0	0.0	0.0	0.0	0.0	0.0	0.0	0.0	0.0	0.0	0.0
392	0.0	0.0	0.0	0.0	0.0	0.0	0.0	0.0	0.0	0.0	0.0	0.0	0.0	0.0	0.0	0.0
2005-06	0.0	0.0	0.0	0.0	0.0	0.0	0.0	0.0	0.0	0.0	0.0	0.0	0.0	0.0	0.0	0.0
392	0.0	0.0	0.0	0.0	0.0	0.0	0.0	0.0	0.0	0.0	0.0	0.0	0.0	0.0	0.0	0.0
2006-07	0.0	0.0	0.0	0.0	0.0	0.0	0.0	0.0	0.0	0.0	0.0	0.0	0.0	0.0	0.0	0.0

NEW PRAGUE AREA SCHOOLS

Resident Students of:
Attending All Neighboring School Districts

Serving Dist.	(1)	(2)	(3)	(4)	(5)	(6)	(7)	(8)	(9)	(10)	(11)	(12)	EC	HK	K	Total
1998-99	4.0	1.8	2.1	3.0	5.0	6.5	3.5	6.7	3.7	6.3	5.0	5.5	0.3	0.3	2.3	56.1
392	2.0	4.0	1.7	3.2	4.7	6.0	6.6	4.9	6.0	5.5	9.9	4.4	0.0	0.0	6.0	64.8
1999-00	4.0	1.0	5.0	3.0	5.4	5.0	8.0	7.1	8.8	8.9	5.9	9.4	0.6	0.0	2.0	74.0
392	3.7	4.1	1.1	5.0	3.0	4.7	7.4	8.9	7.9	10.5	11.3	6.5	0.4	0.0	4.5	78.9
2000-01	5.3	4.0	7.1	2.1	6.7	3.0	6.5	8.3	10.7	12.5	13.6	14.1	0.3	1.4	8.5	104.1
392	9.1	6.6	3.2	7.0	3.3	6.2	5.7	7.5	8.0	10.6	10.3	13.3	0.5	0.0	4.5	95.6
2002-03	5.9	10.2	6.5	3.3	8.7	4.9	8.2	9.0	8.7	7.2	10.2	10.9	0.1	1.0	7.7	102.5
392	9.6	8.3	9.5	5.8	5.7	8.3	6.3	9.8	10.9	5.7	9.3	15.2	0.6	1.5	11.8	118.3
2004-05	18.8	8.9	9.1	6.9	5.8	5.4	10.8	5.3	9.9	13.2	7.8	8.2	1.2	1.8	10.1	123.1
392																

LAKEVILLE

NEW PRAGUE AREA SCHOOLS

Resident Students of:
Attending or Served by:

	(1)	(2)	(3)	(4)	(5)	(6)	(7)	(8)	(9)	(10)	(11)	(12)	EC	HK	K	Total
1998-99	0.0	0.6	0.0	1.0	0.6	0.0	0.9	0.0	1.0	0.9	0.0	1.0	0.0	0.0	0.0	6.0
1999-00	0.0	0.0	0.0	0.0	2.0	0.0	1.0	0.7	0.0	1.0	0.7	0.0	0.3	0.4	0.6	6.6
2000-01	2.0	0.0	1.4	0.0	0.4	2.0	0.0	0.0	1.0	0.0	1.0	3.0	0.0	1.0	0.0	11.8
2001-02	0.4	2.0	0.0	1.0	0.2	0.0	1.0	0.0	1.0	2.0	0.0	1.0	0.0	0.0	1.0	9.6
2002-03	0.9	0.0	2.2	0.0	1.0	0.0	0.0	1.0	1.0	1.0	1.0	0.0	0.0	0.0	1.0	8.1
2003-04	0.0	0.0	0.2	1.1	0.0	2.0	0.0	0.0	1.0	0.9	0.0	1.0	0.0	0.0	1.0	7.2
2004-05	2.0	0.0	0.0	0.0	1.0	0.0	1.0	0.0	0.0	1.0	2.0	0.0	0.0	0.0	0.0	7.0
2005-06	1.0	0.0	0.0	0.0	0.0	1.0	0.0	1.0	0.0	0.0	1.0	1.0	0.0	0.0	1.4	6.4
2006-07	1.0	1.6	1.6	0.0	0.0	1.2	1.0	0.0	1.0	0.0	0.0	1.0	0.0	0.0	2.0	10.5

JORDAN

NEW PRAGUE AREA SCHOOLS

Resident Students of:
Attending or Served by:

	(1)	(2)	(3)	(4)	(5)	(6)	(7)	(8)	(9)	(10)	(11)	(12)	EC	HK	K	Total
1998-99	1.2	1.0	1.0	1.0	2.0	2.0	0.7	2.4	1.7	0.8	1.3	1.7	0.0	0.6	1.0	18.5
1999-00	2.1	1.0	1.0	1.1	1.0	3.0	2.0	2.0	2.3	2.0	2.0	2.0	0.0	0.0	1.1	22.7
2000-01	1.6	3.6	0.2	2.0	1.6	1.0	3.0	2.0	2.0	3.0	2.0	2.0	0.0	0.0	1.2	25.1
2001-02	2.0	2.0	3.0	0.0	1.9	1.3	1.0	3.0	3.0	2.5	3.3	3.0	0.0	0.0	3.0	29.1
2002-03	1.0	1.0	2.0	2.0	0.0	2.0	2.0	2.1	5.0	5.0	2.0	3.0	0.0	0.0	0.0	27.1
2003-04	0.0	1.0	2.0	2.0	3.5	0.3	2.0	3.8	2.0	5.0	4.0	2.0	0.0	0.0	3.0	30.5
2004-05	2.0	1.0	1.0	3.0	2.5	4.0	5.0	1.0	4.8	2.0	5.0	3.0	0.0	0.0	2.0	36.3
2005-06	4.0	2.1	0.0	1.0	2.1	2.1	3.0	4.0	0.0	3.0	1.0	5.0	0.0	1.0	0.0	28.3
2006-07	2.6	4.5	1.4	1.1	1.0	2.0	2.0	2.5	3.0	0.0	1.0	1.0	0.0	0.0	2.4	24.5

BELLE PLAINE

NEW PRAGUE AREA SCHOOLS

Resident Students of:
Attending or Served by:

	(1)	(2)	(3)	(4)	(5)	(6)	(7)	(8)	(9)	(10)	(11)	(12)	EC	HK	K	Total
1998-99	0.0	0.0	0.0	0.0	0.0	1.0	0.0	0.0	0.0	0.0	0.0	1.0	0.0	0.0	0.0	2.0
1999-00	1.0	0.0	1.0	0.0	0.0	0.0	0.0	0.0	0.2	0.0	0.0	0.0	0.0	0.0	1.0	3.2
2000-01	1.0	1.0	0.0	1.0	0.0	0.0	0.0	0.0	0.0	0.3	0.0	0.0	0.0	0.0	0.0	3.3
2001-02	0.4	1.4	1.0	0.0	1.1	0.0	0.2	0.0	0.8	0.0	0.0	0.0	0.0	0.0	0.0	4.8
2002-03	0.0	0.0	1.0	1.0	0.0	1.0	0.0	0.0	0.7	0.3	0.5	0.0	0.0	0.0	0.0	4.5
2003-04	0.0	0.0	0.0	1.0	0.0	0.0	0.0	0.0	1.0	1.0	0.4	0.0	0.0	0.0	0.0	3.4
2004-05	0.0	0.0	0.0	0.8	1.0	0.0	0.8	1.8	0.0	1.6	0.1	0.0	0.0	0.0	1.0	7.1
2005-06	1.0	0.0	0.0	0.0	1.0	1.0	0.0	1.0	2.0	0.0	1.0	0.0	0.0	0.0	0.0	7.0
2006-07	1.0	1.0	0.0	0.0	0.0	2.0	1.0	1.0	1.0	2.0	0.8	0.0	0.0	0.0	0.0	9.8

194
721

LAKEVILLE
NEW PRAGUE AREA SCHOOLS

Resident Students of:		(1)	(2)	(3)	(4)	(5)	(6)	(7)	(8)	(9)	(10)	(11)	(12)	EC	HK	K	Total
Attending or Served by:		Serving Dist.															
1998-99	721	0.0	0.6	0.0	1.0	0.6	0.0	0.9	0.0	1.0	0.9	0.0	1.0	0.0	0.0	0.0	6.0
1999-00	721	0.0	0.0	0.0	0.0	2.0	0.0	1.0	0.7	0.0	1.0	0.7	0.0	0.3	0.4	0.6	6.6
2000-01	721	2.0	0.0	1.4	0.0	0.4	2.0	0.0	0.0	1.0	0.0	1.0	3.0	0.0	1.0	0.0	11.8
2001-02	721	0.4	2.0	0.0	1.0	0.2	0.0	1.0	0.0	1.0	2.0	0.0	1.0	0.0	0.0	1.0	9.6
2002-03	721	0.9	0.0	2.2	0.0	1.0	0.0	0.0	1.0	0.0	1.0	1.0	0.0	0.0	0.0	1.0	8.1
2003-04	721	0.0	0.0	0.2	1.1	0.0	2.0	0.0	0.0	1.0	0.9	0.0	1.0	0.0	0.0	1.0	7.2
2004-05	721	2.0	0.0	0.0	0.0	1.0	0.0	1.0	0.0	0.0	1.0	2.0	0.0	0.0	0.0	0.0	7.0
2005-06	721	1.0	0.0	0.0	0.0	0.0	1.0	0.0	1.0	0.0	0.0	1.0	1.0	0.0	0.0	1.4	6.4
2006-07	721	1.0	1.6	1.6	0.0	0.0	1.2	1.0	0.0	1.0	0.0	0.0	1.0	0.0	0.0	2.0	10.5

717
721

JORDAN
NEW PRAGUE AREA SCHOOLS

Resident Students of:		(1)	(2)	(3)	(4)	(5)	(6)	(7)	(8)	(9)	(10)	(11)	(12)	EC	HK	K	Total
Attending or Served by:		Serving Dist.															
1998-99	721	1.2	1.0	1.0	1.0	2.0	2.0	0.7	2.4	1.7	0.8	1.3	1.7	0.0	0.6	1.0	18.5
1999-00	721	2.1	1.0	1.0	1.1	1.0	3.0	2.0	2.0	2.3	2.0	2.0	2.0	0.0	0.0	1.1	22.7
2000-01	721	1.6	3.6	0.2	2.0	1.6	1.0	3.0	2.0	2.0	3.0	2.0	2.0	0.0	0.0	1.2	25.1
2001-02	721	2.0	2.0	3.0	0.0	1.9	1.3	1.0	3.0	3.0	2.5	3.3	3.0	0.0	0.0	3.0	29.1
2002-03	721	1.0	1.0	2.0	2.0	2.0	2.0	2.0	2.1	5.0	5.0	2.0	3.0	0.0	0.0	0.0	27.1
2003-04	721	0.0	1.0	2.0	2.0	3.5	0.3	2.0	3.8	2.0	2.0	4.0	2.0	0.0	0.0	3.0	30.5
2004-05	721	2.0	1.0	1.0	3.0	2.5	4.0	5.0	1.0	4.8	2.0	5.0	3.0	0.0	0.0	2.0	36.3
2005-06	721	4.0	2.1	0.0	1.0	2.1	2.1	3.0	4.0	0.0	3.0	1.0	5.0	0.0	1.0	0.0	28.3
2006-07	721	2.6	4.5	1.4	1.1	1.0	2.0	2.0	2.5	3.0	0.0	1.0	1.0	0.0	0.0	2.4	24.5

716
721

BELLE PLAINE
NEW PRAGUE AREA SCHOOLS

Resident Students of:		(1)	(2)	(3)	(4)	(5)	(6)	(7)	(8)	(9)	(10)	(11)	(12)	EC	HK	K	Total
Attending or Served by:		Serving Dist.															
1998-99	721	0.0	0.0	0.0	0.0	0.0	1.0	0.0	0.0	0.0	0.0	0.0	1.0	0.0	0.0	0.0	2.0
1999-00	721	1.0	0.0	1.0	0.0	0.0	0.0	0.0	0.0	0.2	0.0	0.0	0.0	0.0	0.0	1.0	3.2
2000-01	721	1.0	1.0	1.0	1.0	0.0	0.0	0.0	0.0	0.0	0.3	0.0	0.0	0.0	0.0	0.0	3.3
2001-02	721	0.4	1.4	1.0	0.0	1.1	0.0	0.2	0.0	0.8	0.0	0.0	0.0	0.0	0.0	0.0	4.8
2002-03	721	0.0	0.0	1.0	1.0	0.0	1.0	0.0	0.0	0.7	0.3	0.5	0.0	0.0	0.0	0.0	4.5
2003-04	721	0.0	0.0	0.0	1.0	0.0	0.0	0.0	0.0	1.0	1.0	0.4	0.0	0.0	0.0	0.0	3.4
2004-05	721	0.0	0.0	0.0	0.8	1.0	0.0	0.8	1.8	0.0	1.6	0.1	0.0	0.0	0.0	1.0	7.1
2005-06	721	1.0	0.0	0.0	0.0	1.0	1.0	0.0	1.0	2.0	0.0	1.0	0.0	0.0	0.0	0.0	7.0
2006-07	721	1.0	1.0	0.0	0.0	0.0	2.0	1.0	1.0	1.0	2.0	0.8	0.0	0.0	0.0	0.0	9.8

**NORTHFIELD
NEW PRAGUE AREA SCHOOLS**

**659
721**

Resident Students of:
Attending or Served by:

Serving Dist.	(1)	(2)	(3)	(4)	(5)	(6)	(7)	(8)	(9)	(10)	(11)	(12)	EC	HK	K	Total
721	0.0	1.0	0.0	0.0	1.0	0.0	1.0	1.0	2.0	0.0	2.0	0.0	0.0	0.4	1.5	9.0
721	1.0	0.0	1.0	0.0	0.0	1.0	1.0	1.0	1.0	0.0	2.0	0.0	0.0	1.0	0.0	8.0
721	1.0	1.0	0.0	1.0	0.0	0.0	1.0	1.0	2.0	0.7	2.0	0.0	0.0	0.0	0.0	9.7
721	1.0	1.9	1.0	1.8	1.0	0.9	1.0	1.0	2.0	2.0	2.0	2.0	0.0	0.0	0.0	15.5
721	0.0	1.0	2.0	1.0	1.0	1.3	1.0	1.0	1.0	2.0	0.3	0.0	0.0	0.0	1.0	12.6
721	1.1	0.0	0.0	2.0	1.0	2.0	1.0	0.8	1.3	2.0	2.0	1.0	0.0	0.0	1.0	15.2
721	1.0	0.0	0.0	0.0	1.1	1.0	1.0	1.0	0.0	1.0	2.0	2.0	0.1	0.0	1.0	11.2
721	1.0	1.0	0.0	0.0	0.0	1.0	1.0	1.0	1.0	0.0	1.0	2.0	0.0	0.0	1.0	10.0
721	1.0	0.4	0.4	0.0	0.0	0.0	1.0	2.0	0.0	1.1	0.0	1.0	0.0	0.0	0.0	8.5

**MONTGOMERY-LONSDALE
NEW PRAGUE AREA SCHOOLS**

**394
721**

Resident Students of:
Attending or Served by:

Serving Dist.	(1)	(2)	(3)	(4)	(5)	(6)	(7)	(8)	(9)	(10)	(11)	(12)	EC	HK	K	Total
721	5.6	5.0	5.7	7.5	4.0	7.0	7.0	4.6	7.3	7.8	5.4	4.3	0.0	0.0	6.1	77.3
721	7.5	7.8	6.4	6.0	8.8	5.1	7.0	8.1	6.3	8.0	8.0	3.8	0.0	0.0	12.5	95.2
721	11.0	8.8	6.8	7.0	6.0	6.4	8.8	6.1	8.3	5.3	9.4	7.5	0.0	3.0	10.7	104.9
721	14.3	13.1	9.8	8.4	10.7	10.1	10.3	11.8	14.0	13.5	8.2	8.6	0.0	1.0	10.4	144.3
721	11.9	13.0	14.3	13.4	10.4	11.4	12.3	12.7	14.6	15.5	12.4	7.1	0.0	1.0	18.8	168.7
721	21.0	17.0	14.9	15.5	11.0	11.0	8.9	12.4	15.8	15.6	14.4	11.8	0.8	0.0	18.1	188.3
721	19.0	24.1	18.4	15.4	15.8	15.4	11.4	12.7	16.3	16.9	15.0	13.6	0.7	2.2	20.7	217.5
721	20.9	18.2	22.7	18.0	15.3	13.5	19.0	10.5	19.0	18.0	12.4	13.0	0.8	1.1	10.0	212.4
721	9.9	20.6	20.1	23.9	22.7	16.4	12.9	21.3	10.8	18.3	15.1	10.0	0.3	1.5	16.6	220.3

**LESUEUR-HENDERSON
NEW PRAGUE AREA SCHOOLS**

**2397
721**

Resident Students of:
Attending or Served by:

Serving Dist.	(1)	(2)	(3)	(4)	(5)	(6)	(7)	(8)	(9)	(10)	(11)	(12)	EC	HK	K	Total
721	0.5	0.0	0.0	0.0	0.0	0.0	0.0	0.0	0.0	0.0	0.0	0.0	0.0	0.0	1.0	1.5
721	1.4	0.0	1.1	0.0	0.0	0.7	0.0	0.0	0.5	0.0	0.0	0.0	0.0	0.0	0.0	3.6
721	0.7	1.0	0.5	0.0	0.0	0.5	0.0	0.0	0.0	0.0	0.0	0.0	0.0	0.0	1.0	3.8
721	1.4	0.4	1.0	0.5	0.0	0.0	0.5	0.0	0.0	0.0	0.5	0.0	0.0	0.0	0.0	4.2
721	0.0	1.0	0.0	1.0	0.0	0.0	0.0	0.6	0.0	0.2	0.0	1.0	0.0	0.0	0.0	3.8
721	0.0	0.0	0.0	0.0	0.0	0.0	0.0	0.0	0.0	0.0	1.0	0.0	0.0	0.0	0.0	1.0
721	0.0	0.0	0.0	0.0	0.0	0.0	0.0	0.0	0.0	0.0	0.0	1.2	0.0	0.0	0.0	1.2
721	0.0	0.0	1.0	0.0	0.0	1.0	0.0	0.0	0.0	0.0	1.0	0.0	0.0	0.0	0.0	3.0
721	0.0	0.0	0.0	1.0	0.0	0.0	1.0	0.0	0.0	0.0	0.0	0.7	0.0	0.0	0.0	2.7

392
721

LECENTER
NEW PRAGUE AREA SCHOOLS

Resident Students of:
Attending or Served by:

Serving Dist.	(1)	(2)	(3)	(4)	(5)	(6)	(7)	(8)	(9)	(10)	(11)	(12)	EC	HK	K	Total	
721	0.0	0.0	0.0	1.0	0.0	0.0	0.0	0.6	0.0	0.0	0.0	0.0	0.0	0.0	0.0	1.0	2.6
1998-99	1.0	0.0	0.0	0.0	1.0	0.0	0.0	0.0	1.0	0.3	0.0	0.3	0.0	0.0	0.0	0.0	3.6
1999-00	0.0	1.0	0.0	0.0	1.0	1.0	0.0	0.0	0.0	0.0	0.0	0.0	0.0	0.0	0.0	0.0	3.0
2000-01	0.0	0.0	1.0	0.0	0.0	2.0	1.0	0.0	0.0	0.0	1.0	0.0	0.0	0.0	0.0	0.0	5.0
2001-02	0.0	0.0	0.0	1.0	0.0	0.0	1.4	1.0	0.0	0.0	0.0	1.0	0.0	0.0	0.0	0.0	4.4
2002-03	1.0	0.0	0.0	0.0	1.0	0.0	0.0	2.0	0.0	1.0	1.0	0.0	0.0	0.0	0.0	0.0	6.0
2003-04	0.0	2.0	0.0	0.0	0.0	0.5	0.0	0.0	2.0	1.0	0.0	1.0	0.0	0.0	0.0	1.0	7.5
2004-05	0.0	0.0	1.0	0.0	0.0	0.0	0.0	0.0	0.0	2.9	2.0	0.0	0.0	0.0	0.0	0.0	5.9
2005-06	0.0	0.0	0.0	1.0	0.0	0.0	0.0	0.0	0.0	0.7	0.0	2.0	0.0	0.0	0.0	0.0	8.6
2006-07	0.0	0.0	0.0	0.0	0.0	0.0	0.0	0.0	0.0	0.0	3.9	2.0	0.0	0.0	0.0	1.0	8.6

721

NEW PRAGUE AREA SCHOOLS

Resident Students of Neighboring Districts Attending New Prague Schools
Attending or Served by:

Serving Dist.	(1)	(2)	(3)	(4)	(5)	(6)	(7)	(8)	(9)	(10)	(11)	(12)	EC	HK	K	Total	
721	7.3	7.6	6.7	10.5	7.6	10.0	9.6	7.6	12.0	9.5	8.7	8.0	0.0	1.0	10.7	116.7	
1998-99	14.0	8.8	10.5	7.1	12.8	9.8	11.0	11.8	10.3	13.3	10.7	6.1	0.3	1.4	15.2	142.9	
1999-00	17.3	16.4	8.9	11.0	9.0	10.9	12.8	9.1	13.3	9.3	14.4	12.5	0.0	4.0	12.8	161.6	
2000-01	19.5	20.8	16.8	11.7	14.9	14.3	15.0	15.8	20.8	20.0	13.1	14.6	0.0	1.0	14.4	212.5	
2001-02	13.8	16.0	21.6	19.4	12.4	15.7	16.7	18.3	21.3	23.9	16.2	12.1	0.0	1.0	20.8	229.1	
2002-03	23.1	18.0	17.1	21.6	16.5	15.3	11.9	19.0	22.1	24.5	22.8	15.8	0.8	0.0	23.1	251.7	
2003-04	24.0	27.1	19.4	19.2	21.3	21.0	19.2	16.4	23.1	23.5	24.1	20.8	0.8	2.2	25.7	287.8	
2004-05	27.9	21.3	24.7	19.0	18.4	19.6	23.0	17.5	22.0	23.9	19.4	21.0	0.8	2.1	12.4	273.0	
2005-06	15.5	28.0	23.6	27.0	24.8	21.6	18.9	26.8	16.5	21.3	20.7	15.7	0.3	1.6	22.7	284.8	
2006-07																	

Appendix B – Resident Students of New Prague

This Report answers the Questions?? Where did the Resident students of the NEW PRAGUE AREA SCHOOLS District attend school in the 2006-07 School Year?
How many? In Which Grades?

School District	NEW PRAGUE AREA SCHOOLS												Total
	01	02	03	04	05	06	07	08	09	10	11	12	
NEW PRAGUE AREA SCHOOLS	229.90	244.60	241.48	218.44	230.82	222.44	229.49	253.92	268.10	241.83	259.89	190.07	3083.7
MONTGOMERY-LEONSDALE	11.78	5.71	2.00	3.56	4.76	1.00	8.00	0.41	3.28	3.00	3.88	1.52	211.87
CARVER-SCOTT EDUCATIONAL COOP					0.03		0.83	0.41		2.84	11.05	16.12	3.76
NORTHFIELD	3.99	1.00	1.00	0.38	3.00	3.00	2.39	1.26	3.00	2.90	1.21	2.69	2.89
JORDAN	1.00	1.00	3.77	2.00	1.00	1.00	1.27	4.00	2.82	5.55	0.73	4.00	2.89
PRIOR LAKE-SAVAGE	719	2.00	2.88	2.00	2.44	0.39	0.15	4.34	1.00	3.00	3.97	1.00	2.00
LAKEVILLE	194	2.00	1.22	2.11	1.00				1.00	2.15	2.00	3.97	2.89
MINNESOTA RIVER VALLEY SP. ED. COOP	993		0.27	0.48				2.00	3.22	2.35	3.46	1.34	13.2
FARMINGTON	192	1.00						2.00	3.22	0.88	1.00		4.9
MINNESOTA TRANSITIONS CHARTER 4	4617	1.00	2.45	1.24									4.9
SHAKOPEE	720		1.00				0.14						0.14
BEMIDJI REGIONAL INTERDIST. CHARTER	1000								1.00	2.82	0.93	0.93	3.8
ROSEMOUNT-APPLE VALLEY-EAGAN	108	0.75											0.93
BELLE PLAINE	716			0.22			1.00						1.00
BLUESKY CHARTER SCHOOL	4085									0.80		1.86	2.6
INTERMEDIATE SCHOOL DISTRICT 287	287							0.60			0.69	1.83	2.4
CHASKA	112			0.89							0.67		2.1
BURNSVILLE	191		1.00	1.00									2.1
BLOOMINGTON	274				1.00								1.00
WAYZATA	284					1.00							2.0
INTERMEDIATE SCHOOL DISTRICT 917	917								0.74	0.03		0.80	1.7
SKILLS FOR TOMORROW CHARTER 5	4007							1.00	0.42				1.4
PRAIRIE CREEK COMMUNITY SCHOOL	4090	1.00	0.08										1.1
MINNESOTA STATE ACAD.	160				1.00								1.0
RED WING	256												1.0
EDEN PRAIRIE	272												1.0
ST PAUL CONSERVATORY PERFORM	4112					1.00							1.0
FARBALT	656										0.82		0.9
SIBLEY EAST	2310											0.92	0.8
SOBRIETY HIGH	4108											0.87	0.9
ST. CLOUD	742									0.81			0.8
FERGUS FALLS AREA SP. ED. COOP.	935								0.63				0.6
N.E. METRO INTERMEDIATE DIST. 916	916												0.6
MINNESOTA ONLINE HIGH SCHOOL	4150											0.52	0.5
ST. PETER	508									0.50			0.5
MINNEAPOLIS	111			0.04									0.4
BRANDER	181							0.08	0.04	0.32			0.4
ROBINSON	31							0.30					0.3
ROBINSDALE	281							0.08					0.3
WEST ST. PAUL-MENDOTA HTS.-EAGA	197	0.08											0.1
NEW ULM	88											0.04	0.04
OWATONNA	781							0.02	0.01	0.02			0.04
CENTENNA	12												0.01
ALBERT LEA	241								0.01				0.01
ST. PAUL	825								0.01				0.01

APPENDIX C – Students Served in New Prague Area Schools

This Report answers the Questions?? Which MN School Districts enrolled students in the NEW PRAGUE AREA SCHOOLS District in the 2006-07 School Year? How many? In Which Grades?

2006-07 School Year		01	02	03	04	05	06	07	08	09	10	11	12	EC	HK	K	Total	(%)	
Grade Level		230	245	241	218	231	222	229	254	268	242	259	190	27	15	212	3084	90.97%	
NEW PRAGUE AREA SCHOOLS		18	29	24	29	25	24	20	27	19	21	24	19	0	2	26	306	9.03%	
Served FROM other Sch. Districts		248	274	266	248	256	246	249	281	287	263	283	209	28	16	238	3390	100.00%	
Total Resident Students																			
721																			
NEW PRAGUE AREA SCHOOLS																			
Adjusted Average Daily Membership for 2006-07																			
School District	Resident District	01	02	03	04	05	06	07	08	09	10	11	12	EC	HK	K	Grand Total	RANK	
NEW PRAGUE AREA SCHOOLS	721	229.90	244.60	241.48	218.44	230.82	222.44	228.49	253.92	268.10	241.83	258.88	190.07	27.27	14.77	211.67	3,083.68	(1)	
MONTGOMERY-LONSDALE	394	9.92	20.56	20.12	23.90	22.73	16.39	12.85	21.34	10.75	18.25	15.06	10.00	0.27	1.54	16.58	220.26	(2)	
JORDAN	717	2.60	4.47	1.42	1.07	1.00	2.00	2.00	2.49	3.00		1.00	1.00			2.41	24.46	(3)	
LAKEVILLE	184	1.00	1.63	1.63	0.01	0.02	1.16	1.00		1.00			1.00		0.01	2.02	10.48	(4)	
PRIOR LAKE-SAVAGE	719	1.67	0.10		1.10		2.00	1.00		1.00		2.00				1.00	9.87	(5)	
BELLE PLAINE	716	1.00	1.00				2.00	1.00	1.00	1.00	2.00	0.77					9.77	(6)	
LECENTER	392				1.00					0.71		3.91	2.00			1.00	8.62	(7)	
NORTHFIELD	659	1.00	0.37	0.40		1.00		1.00	2.00		1.06		1.00			0.70	8.53	(8)	
SHAKOPEE	720			0.66						1.00		1.00					2.66	(9)	
LESJEUR-HENDERSON	2397				1.00			1.00					0.66				2.66	(9)	
FARMINGTON	192	1.00			1.00											0.19	2.19	(11)	
ROSEMOUNT-APPLE VALLEY-EAGLE	196		1.00													1.00	2.00	(12)	
FARIBAULT	656									0.51			1.00				1.51	(13)	
CANNON FALLS	252												1.00				1.00	(14)	
WASECA	829												1.00				1.00	(14)	
WATERVILLE-ELYSIAN-MORRISTO	2143															1.00	1.00	(14)	